

Product datasheet for **CB630664**

Frozen Tissue Blocks, Myeloid tissue

Product data:

Product Type:	Frozen Blocks
Disease State:	Cancer
Diagnosis Category:	Leukemia
Tissue:	Myeloid tissue
Frozen Sample ID:	FR6A38A7A4
Case ID:	CU0000006636
Tissue of Origin:	Myeloid tissue
Site of Finding:	Spleen
Appearance:	Tumor
Sample Diagnosis (from Pathology Verification):	Leukemia, acute myeloid
Normal:	12%
Lesional:	70%
Tumor:	18%
Tumor Hypo/Acellular Stroma:	0%
Tumor Hypercellular Stroma:	0%
Necrosis:	0%
Pathology Verification notes from H&E review:	18% immature myeloid cells by flow cytometry; lesion: marked congestion and old hemorrhage
CASE Diagnosis (from medical center path report):	Leukemia, acute myeloid
Age:	72
Gender:	Male
Tumor Grade:	Not Reported



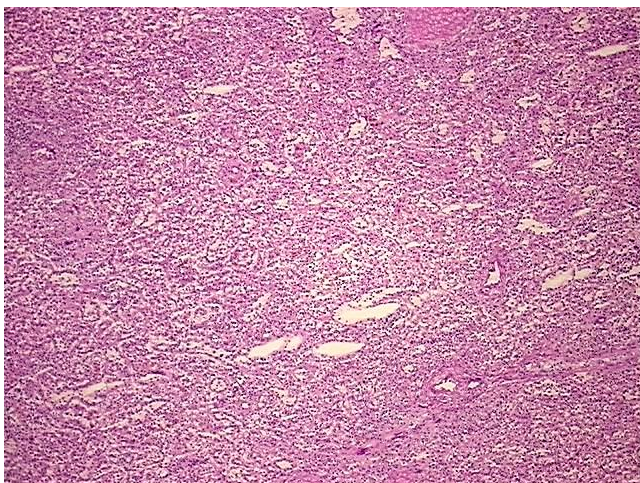
[View online »](#)

Minimum Stage Grouping: Not Reported

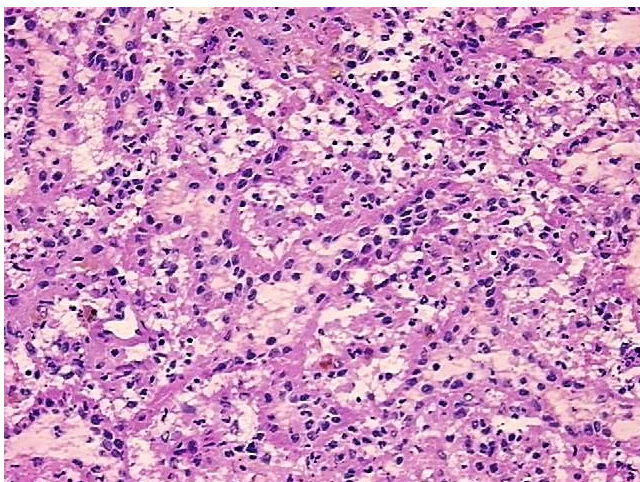
Storage: Store frozen tissue blocks at -80°C.

Stability: Frozen tissue blocks are stable for at least one year from date of shipping when stored at -80°C.

Product images:



4x Image



20x Image