

## Product datasheet for **CB630253**

### Frozen Tissue Blocks, Pancreas

#### Product data:

|   |   |
|---|---|
| Product Type:                                     | Frozen Blocks                                 |
| Disease State:                                    | Cancer  |
| Diagnosis Category:                               | Carcinoid/Neuroendocrine Tumors               |
| Tissue:   | Pancreas                                      |
| Frozen Sample ID:                                 | FR65EE2CF6                                    |
| Case ID:  | CU0000006615                                  |
| Tissue of Origin:                                 | Pancreas                                      |
| Site of Finding:                                  | Liver   |
| Appearance:                                       | Tumor   |
| Sample Diagnosis (from Pathology Verification):   | Tumor of pancreas, neuroendocrine, metastatic |
| Normal:   | 0%  |
| Lesional:   | 0%  |
| Tumor:  | 98%   |
| Tumor Hypo/Acellular Stroma:                      | 2%  |
| Tumor Hypercellular Stroma:                       | 0%  |
| Necrosis:   | 0%  |
| CASE Diagnosis (from medical center path report): | Tumor of pancreas, neuroendocrine             |
| Age:  | 69  |
| Gender:   | Female  |
| Tumor Grade:                                      | AJCC G1: Well differentiated                  |
| Minimum Stage Grouping:                           | Not Reported                                  |

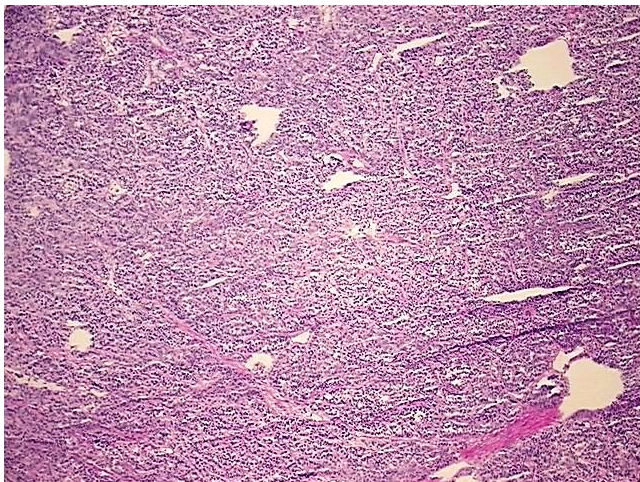


[View online »](#)

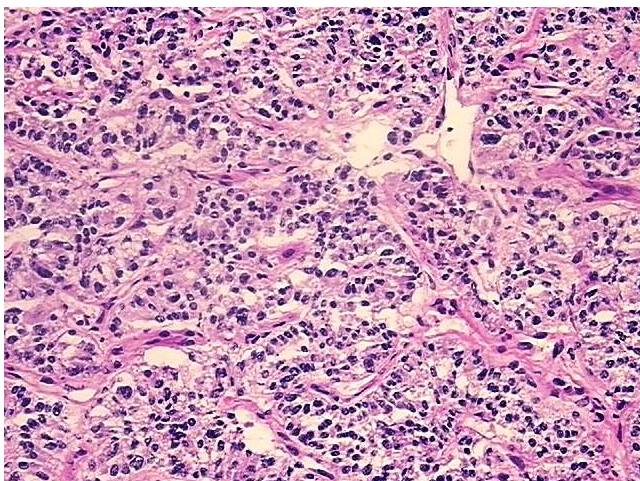
**Storage:** Store frozen tissue blocks at -80°C.

**Stability:** Frozen tissue blocks are stable for at least one year from date of shipping when stored at -80°C.

**Product images:**



4x Image



20x Image