

Product datasheet for **CB630213**

Frozen Tissue Blocks, Endometrium

Product data:

| | |
|---|---|
| Product Type: | Frozen Blocks |
| Disease State: | Cancer |
| Diagnosis Category: | Endometrial Cancer |
| Tissue: | Endometrium |
| Frozen Sample ID: | FR65EE2D0B |
| Case ID: | CU0000006614 |
| Tissue of Origin: | Endometrium |
| Site of Finding: | Omentum |
| Appearance: | Tumor |
| Sample Diagnosis (from Pathology Verification): | Adenocarcinoma of endometrium, papillary serous, metastatic |
| Normal: | 10% |
| Lesional: | 0% |
| Tumor: | 60% |
| Tumor Hypo/Acellular Stroma: | 0% |
| Tumor Hypercellular Stroma: | 30% |
| Necrosis: | 0% |
| CASE Diagnosis (from medical center path report): | Adenocarcinoma of endometrium, papillary serous |
| Age: | 66 |
| Gender: | Female |
| Tumor Grade: | FIGO G3: Poorly differentiated |
| Minimum Stage Grouping: | IVB |



[View online »](#)

T (Extent of Primary Tumor): pT3b

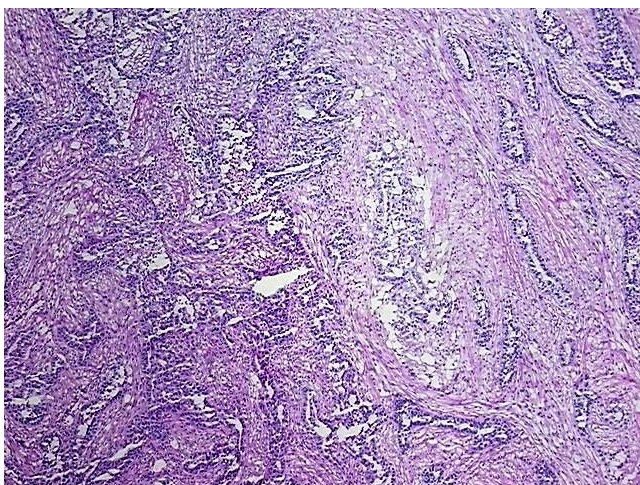
N (Lymph node metastasis): pNX

M (Distant metastasis): pM1

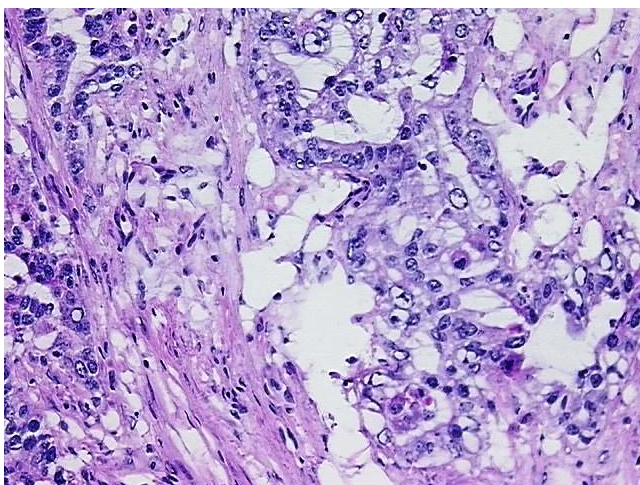
Storage: Store frozen tissue blocks at -80°C.

Stability: Frozen tissue blocks are stable for at least one year from date of shipping when stored at -80°C.

Product images:



4x Image



20x Image