

Product datasheet for **CB624807**

Frozen Tissue Blocks, Kidney

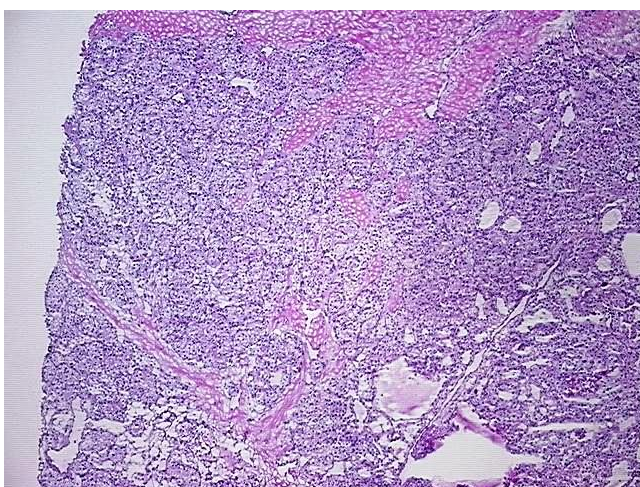
Product data:

| | |
|---|---|
| Product Type: | Frozen Blocks |
| Disease State: | Cancer |
| Diagnosis Category: | Renal Cell Carcinoma |
| Tissue: | Kidney |
| Frozen Sample ID: | FR00020BC8 |
| Case ID: | CU0000005905 |
| Tissue of Origin: | Kidney |
| Site of Finding: | Thyroid gland |
| Appearance: | Tumor |
| Sample Diagnosis (from Pathology Verification): | Carcinoma of kidney, renal cell, metastatic |
| Normal: | 0% |
| Lesional: | 0% |
| Tumor: | 90% |
| Tumor Hypo/Acellular Stroma: | 10% |
| Tumor Hypercellular Stroma: | 0% |
| Necrosis: | 0% |
| Pathology Verification notes from H&E review: | Tumor Stroma (Hypo/Acellular): Fibrosis |
| CASE Diagnosis (from medical center path report): | Carcinoma of kidney, renal cell, metastatic |
| Age: | 64 |
| Gender: | Male |
| Tumor Grade: | Not Reported |

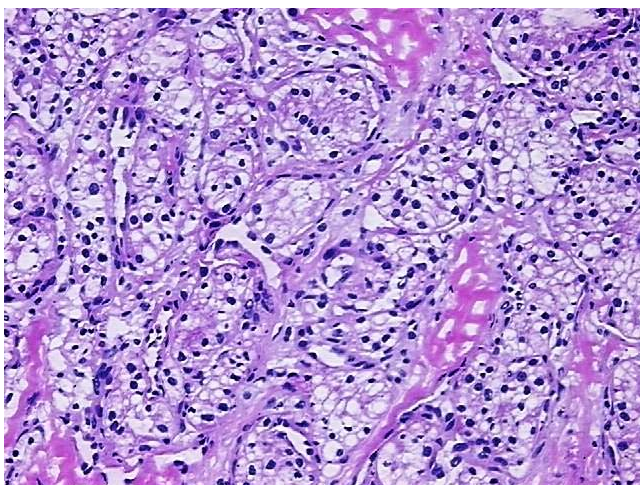


[View online »](#)

| | |
|------------------------------|---|
| Minimum Stage Grouping: | IV |
| T (Extent of Primary Tumor): | pTX |
| N (Lymph node metastasis): | pNX |
| M (Distant metastasis): | pM1 |
| Storage: | Store frozen tissue blocks at -80°C. |
| Stability: | Frozen tissue blocks are stable for at least one year from date of shipping when stored at -80°C. |

Product images:

4x Image



20x Image