

## Product datasheet for **CB622879**

### Frozen Tissue Blocks, Liver

#### Product data:

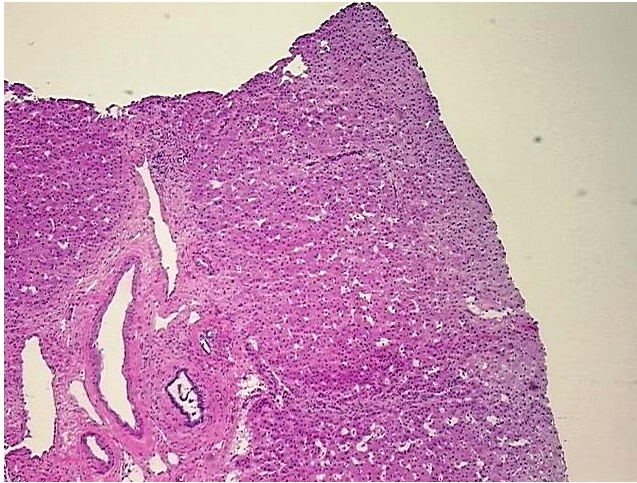
Product Type:	Frozen Blocks
Disease State:	Normal
Diagnosis Category:	Normal
Tissue:	Liver
Frozen Sample ID:	FR0001A6A0
Case ID:	CU0000005763
Tissue of Origin:	Liver
Site of Finding:	Liver
Appearance:	Lesion
Sample Diagnosis (from Pathology Verification):	Within normal limits
Normal:	95%
Lesional:	5%
Tumor:	0%
Tumor Hypo/Acellular Stroma:	0%
Tumor Hypercellular Stroma:	0%
Necrosis:	0%
Pathology Verification notes from H&E review:	Non Tumor Structures: 90% Lobules, 8% Triads, 2% Hemangioma, small, incidental
CASE Diagnosis (from medical center path report):	Cyst of liver, biliary
Age:	45
Gender:	Female
Storage:	Store frozen tissue blocks at -80°C.



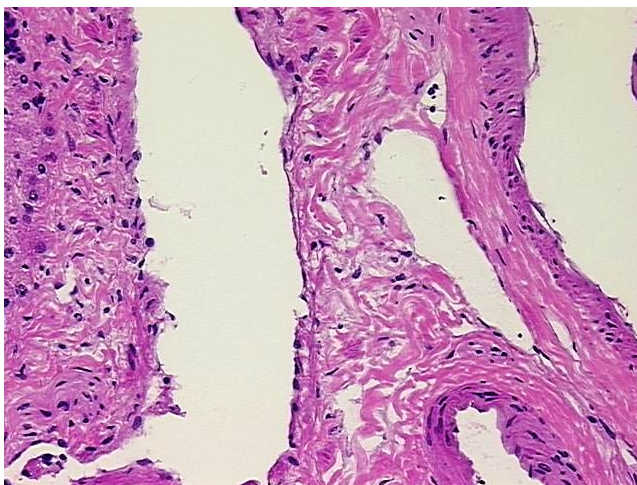
[View online »](#)

**Stability:** Frozen tissue blocks are stable for at least one year from date of shipping when stored at -80°C.

**Product images:**



4x Image



20x Image