

Product datasheet for **CB618354**

Frozen Tissue Blocks, Uterus

Product data:

Product Type:	Frozen Blocks
Disease State:	Cancer
Diagnosis Category:	Endometrial Cancer
Tissue:	Uterus
Frozen Sample ID:	FR65EDEB60
Case ID:	CU0000005318
Tissue of Origin:	Uterus
Site of Finding:	Uterus
Appearance:	Tumor
Sample Diagnosis (from Pathology Verification):	Carcinosarcoma of endometrium
Normal:	0%
Lesional:	0%
Tumor:	70%
Tumor Hypo/Acellular Stroma:	0%
Tumor Hypercellular Stroma:	2%
Necrosis:	28%
CASE Diagnosis (from medical center path report):	Carcinosarcoma of endometrium
Age:	80
Gender:	Female
Tumor Grade:	FIGO G3: Poorly differentiated
Minimum Stage Grouping:	IB



[View online »](#)

T (Extent of Primary Tumor): pT1b

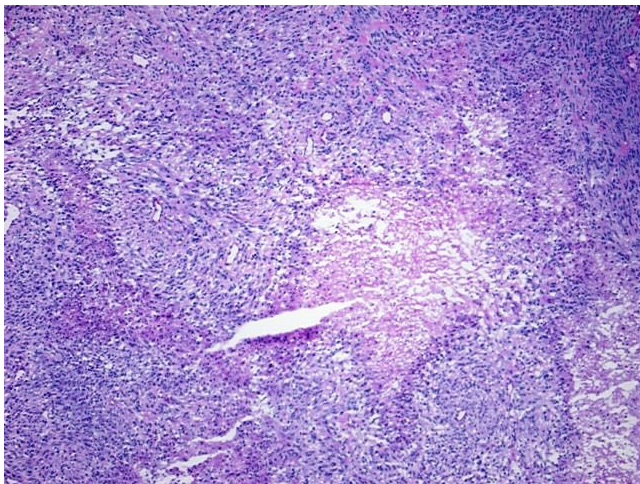
N (Lymph node metastasis): pNX

M (Distant metastasis): pMX

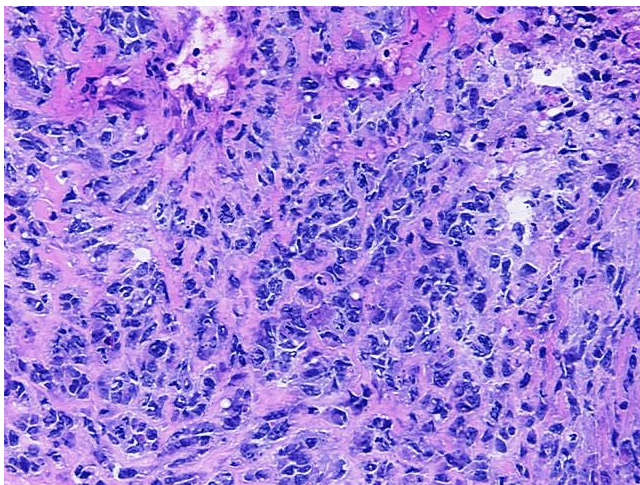
Storage: Store frozen tissue blocks at -80°C.

Stability: Frozen tissue blocks are stable for at least one year from date of shipping when stored at -80°C.

Product images:



4x Image



20x Image