

Product datasheet for **CB618108**

Frozen Tissue Blocks, Thyroid gland

Product data:

| | |
|---|---|
| Product Type: | Frozen Blocks |
| Disease State: | Other Disease |
| Diagnosis Category: | Thyroiditis |
| Tissue: | Thyroid gland |
| Frozen Sample ID: | FR000165C3 |
| Case ID: | CU0000005300 |
| Tissue of Origin: | Thyroid gland |
| Site of Finding: | Thyroid gland |
| Appearance: | Lesion |
| Sample Diagnosis (from Pathology Verification): | Thyroiditis, Hashimotos |
| Normal: | 0% |
| Lesional: | 100% |
| Tumor: | 0% |
| Tumor Hypo/Acellular Stroma: | 0% |
| Tumor Hypercellular Stroma: | 0% |
| Necrosis: | 0% |
| Pathology Verification notes from H&E review: | Extensive lymphoid tissue infiltration consistent with Hashimotos thyroiditis |
| CASE Diagnosis (from medical center path report): | Carcinoma of thyroid, papillary, follicular variant |
| Age: | 31 |
| Gender: | Female |
| Tumor Grade: | n/a |



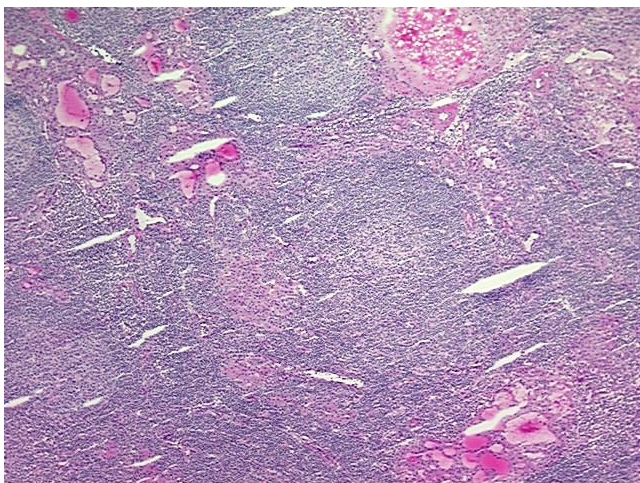
[View online »](#)

Minimum Stage n/a
Grouping:

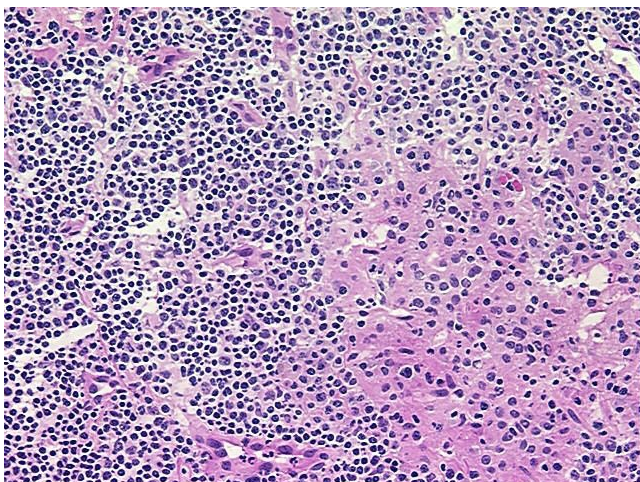
Storage: Store frozen tissue blocks at -80°C.

Stability: Frozen tissue blocks are stable for at least one year from date of shipping when stored at -80°C.

Product images:



4x Image



20x Image