

Product datasheet for **CB617833**

Frozen Tissue Blocks, Metastasis, unknown source

Product data:

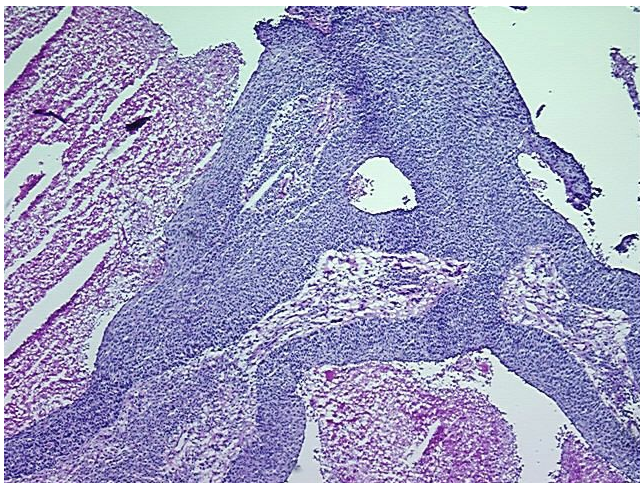
| | |
|---|--|
| Product Type: | Frozen Blocks |
| Disease State: | Cancer |
| Tissue: | Unknown tissue |
| Frozen Sample ID: | FR00016424 |
| Case ID: | CU0000005276 |
| Tissue of Origin: | Metastasis, unknown source |
| Site of Finding: | Lymph node |
| Appearance: | Tumor |
| Sample Diagnosis (from Pathology Verification): | Carcinoma of unknown origin, squamous cell, metastatic |
| Normal: | 0% |
| Lesional: | 0% |
| Tumor: | 55% |
| Tumor Hypo/Acellular Stroma: | 0% |
| Tumor Hypercellular Stroma: | 25% |
| Necrosis: | 20% |
| Pathology Verification notes from H&E review: | Tumor metastasized to lymph node |
| CASE Diagnosis (from medical center path report): | Carcinoma of unknown origin, squamous cell, metastatic |
| Age: | 59 |
| Gender: | Male |
| Tumor Grade: | AJCC G3: Poorly differentiated |
| Storage: | Store frozen tissue blocks at -80°C. |



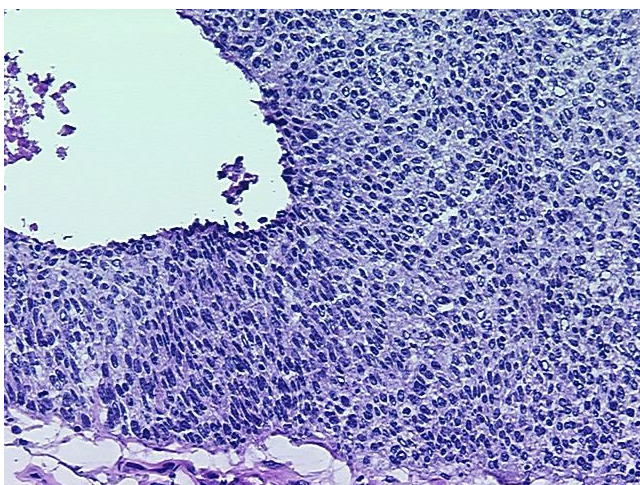
[View online »](#)

Stability: Frozen tissue blocks are stable for at least one year from date of shipping when stored at -80°C.

Product images:



4x Image



20x Image