

Product datasheet for **CB617316**

Frozen Tissue Blocks, Endometrium

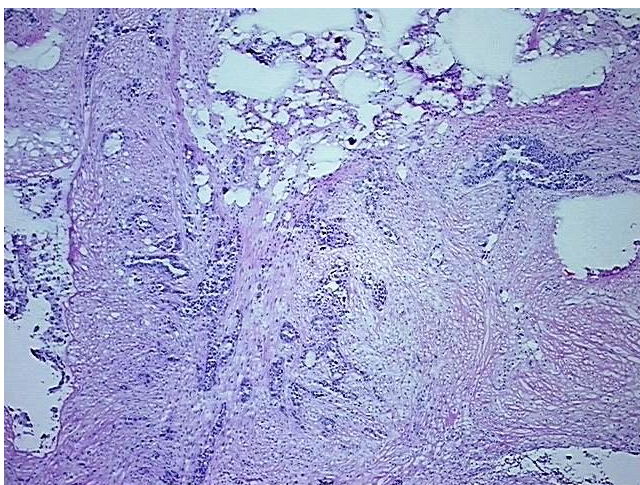
Product data:

Product Type:	Frozen Blocks
Disease State:	Cancer
Diagnosis Category:	Endometrial Cancer
Tissue:	Endometrium
Frozen Sample ID:	FR5B31F3C7
Case ID:	CU0000005243
Tissue of Origin:	Endometrium
Site of Finding:	Omentum
Appearance:	Tumor
Sample Diagnosis (from Pathology Verification):	Adenocarcinoma of endometrium, papillary serous, metastatic
Normal:	10%
Lesional:	0%
Tumor:	30%
Tumor Hypo/Acellular Stroma:	0%
Tumor Hypercellular Stroma:	60%
Necrosis:	0%
Pathology Verification notes from H&E review:	Tumor Stroma (Cellular): Desmoplastic reaction; Other Features/Comments: Tumor area: 5 mm x 5 mm
CASE Diagnosis (from medical center path report):	Adenocarcinoma of endometrium, papillary serous
Age:	66
Gender:	Female
Tumor Grade:	FIGO G3: Poorly differentiated

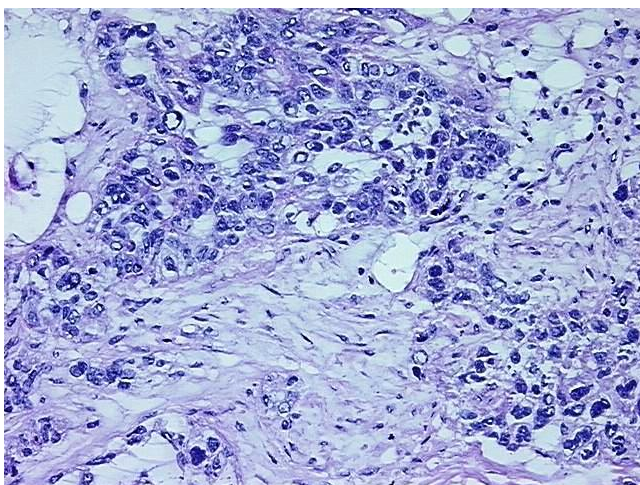


[View online »](#)

Minimum Stage Grouping:	IVA
T (Extent of Primary Tumor):	pT4
N (Lymph node metastasis):	pNX
M (Distant metastasis):	pMX
Storage:	Store frozen tissue blocks at -80°C.
Stability:	Frozen tissue blocks are stable for at least one year from date of shipping when stored at -80°C.

Product images:

4x Image



20x Image