

Product datasheet for **CB617041**

Frozen Tissue Blocks, Colon: right

Product data:

Product Type:	Frozen Blocks
Disease State:	Normal
Diagnosis Category:	Normal
Tissue:	Colon
Frozen Sample ID:	FR5B335B01
Case ID:	CU0000005221
Tissue of Origin:	Colon: right
Site of Finding:	Colon: right
Appearance:	Normal
Sample Diagnosis (from Pathology Verification):	Within normal limits
Normal:	100%
Lesional:	0%
Tumor:	0%
Tumor Hypo/Acellular Stroma:	0%
Tumor Hypercellular Stroma:	0%
Necrosis:	0%
Pathology Verification notes from H&E review:	75% Mucosa, 20% Submucosa, 5% Muscle
CASE Diagnosis (from medical center path report):	Colitis, ischemic
Age:	67
Gender:	Female
Tumor Grade:	n/a



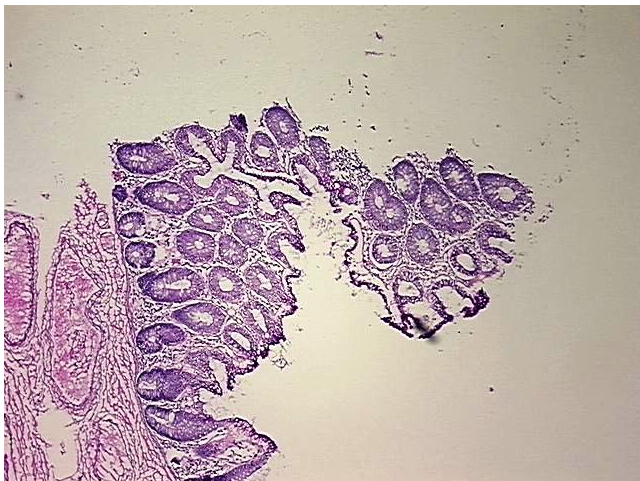
[View online »](#)

Minimum Stage
Grouping: n/a

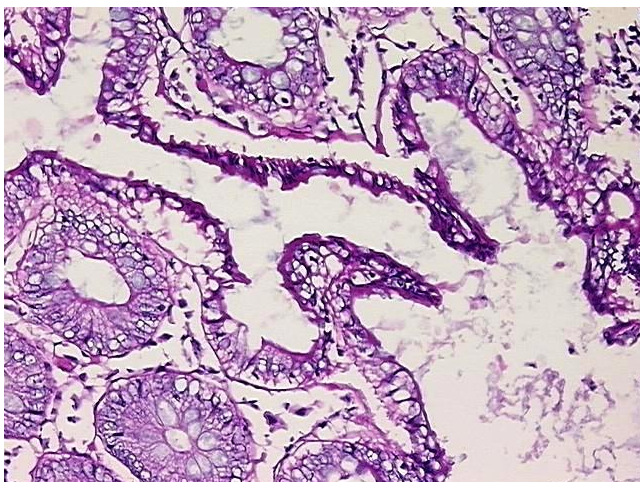
Storage: Store frozen tissue blocks at -80°C.

Stability: Frozen tissue blocks are stable for at least one year from date of shipping when stored at -80°C.

Product images:



4x Image



20x Image