

## Product datasheet for **CB616940**

### Frozen Tissue Blocks, Endometrium

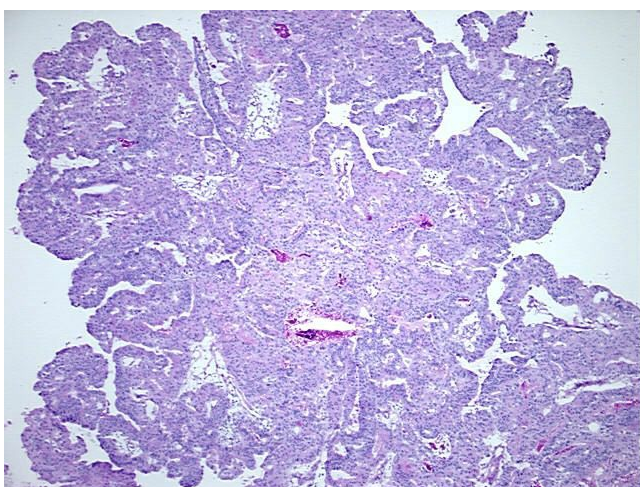
#### Product data:

Product Type:	Frozen Blocks
Disease State:	Cancer
Diagnosis Category:	Endometrial Cancer
Tissue:	Endometrium
Frozen Sample ID:	FR00015FC5
Case ID:	CU0000005214
Tissue of Origin:	Endometrium
Site of Finding:	Fallopian tube
Appearance:	Tumor
Sample Diagnosis (from Pathology Verification):	Adenocarcinoma of endometrium, endometrioid, metastatic
Normal:	0%
Lesional:	0%
Tumor:	40%
Tumor Hypo/Acellular Stroma:	0%
Tumor Hypercellular Stroma:	10%
Necrosis:	50%
Pathology Verification notes from H&E review:	Tumor metastasized to fallopian tube
CASE Diagnosis (from medical center path report):	Adenocarcinoma of endometrium, endometrioid
Age:	57
Gender:	Female
Tumor Grade:	FIGO G2: Moderately differentiated

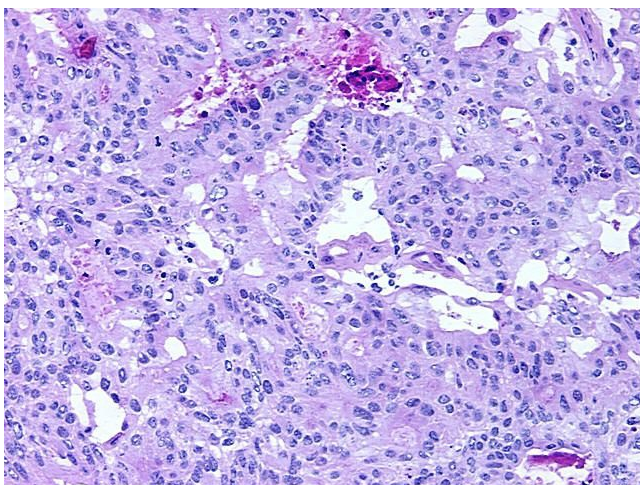


[View online »](#)

Minimum Stage Grouping:	IVB
T (Extent of Primary Tumor):	pT3a
N (Lymph node metastasis):	pN1
M (Distant metastasis):	pM1
Storage:	Store frozen tissue blocks at -80°C.
Stability:	Frozen tissue blocks are stable for at least one year from date of shipping when stored at -80°C.

**Product images:**

4x Image



20x Image