

## Product datasheet for **CB616938**

### Frozen Tissue Blocks, Endometrium

#### Product data:

Product Type:	Frozen Blocks
Disease State:	Cancer
Diagnosis Category:	Endometrial Cancer
Tissue:	Endometrium
Frozen Sample ID:	FR00015FC3
Case ID:	CU0000005214
Tissue of Origin:	Endometrium
Site of Finding:	Fallopian tube
Appearance:	Tumor
Sample Diagnosis (from Pathology Verification):	Adenocarcinoma of endometrium, endometrioid, metastatic
Normal:	0%
Lesional:	0%
Tumor:	35%
Tumor Hypo/Acellular Stroma:	0%
Tumor Hypercellular Stroma:	45%
Necrosis:	20%
CASE Diagnosis (from medical center path report):	Adenocarcinoma of endometrium, endometrioid
Age:	57
Gender:	Female
Tumor Grade:	FIGO G2: Moderately differentiated
Minimum Stage Grouping:	IVB



[View online »](#)

T (Extent of Primary Tumor): pT3a

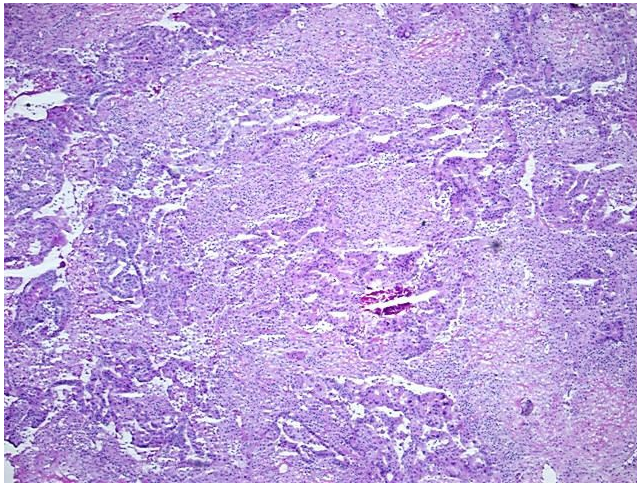
N (Lymph node metastasis): pN1

M (Distant metastasis): pM1

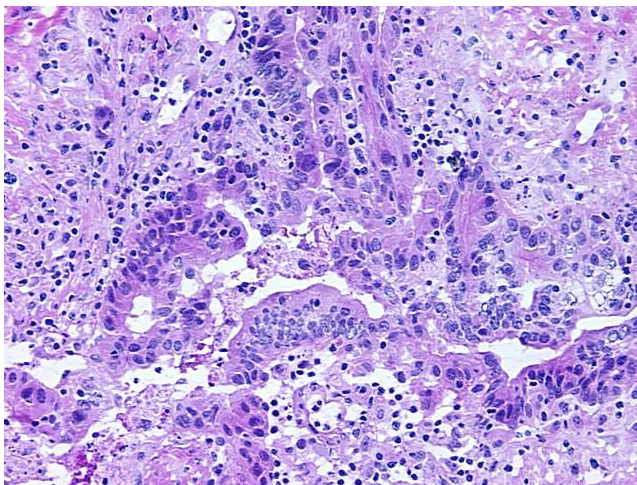
Storage: Store frozen tissue blocks at -80°C.

Stability: Frozen tissue blocks are stable for at least one year from date of shipping when stored at -80°C.

### Product images:



4x Image



20x Image