

## Product datasheet for **CB616934**

### Frozen Tissue Blocks, Endometrium

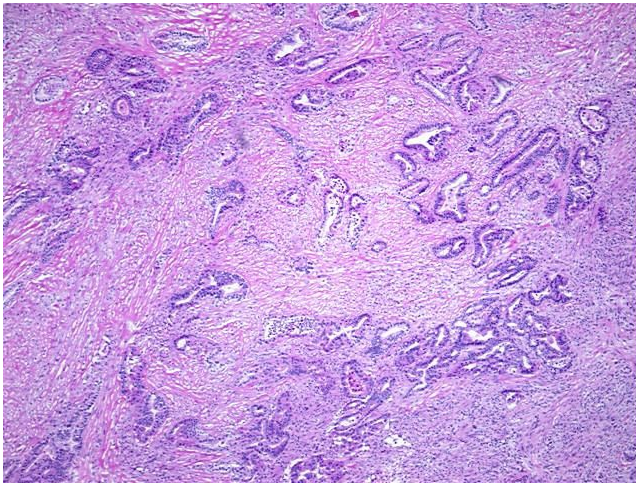
#### Product data:

|   |   |
|---|---|
| Product Type:                                     | Frozen Blocks   |
| Disease State:                                    | Cancer  |
| Diagnosis Category:                               | Endometrial Cancer                                      |
| Tissue:   | Endometrium   |
| Frozen Sample ID:                                 | FR00015FBF  |
| Case ID:  | CU0000005214  |
| Tissue of Origin:                                 | Endometrium   |
| Site of Finding:                                  | Ovary: right  |
| Appearance:                                       | Tumor   |
| Sample Diagnosis (from Pathology Verification):   | Adenocarcinoma of endometrium, endometrioid, metastatic |
| Normal:   | 0%  |
| Lesional:   | 0%  |
| Tumor:  | 20%   |
| Tumor Hypo/Acellular Stroma:                      | 0%  |
| Tumor Hypercellular Stroma:                       | 75%   |
| Necrosis:   | 5%  |
| Pathology Verification notes from H&E review:     | Tumor Stroma (Cellular): Fibroblastic cells             |
| CASE Diagnosis (from medical center path report): | Adenocarcinoma of endometrium, endometrioid             |
| Age:  | 57  |
| Gender:   | Female  |
| Tumor Grade:                                      | FIGO G2: Moderately differentiated                      |

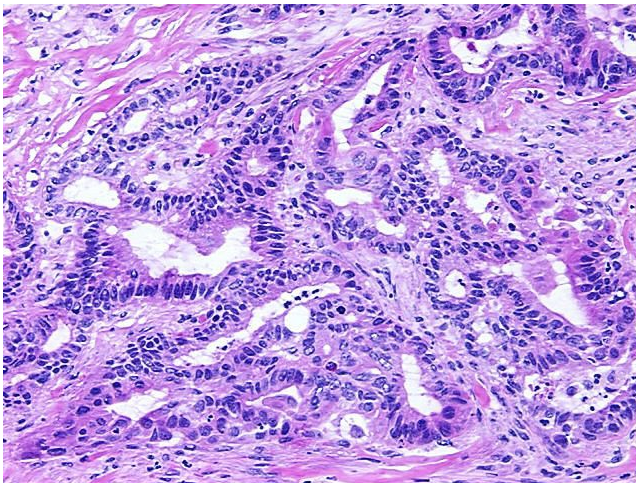


[View online »](#)

|                              |   |
|------------------------------|---|
| Minimum Stage Grouping:      | IVB   |
| T (Extent of Primary Tumor): | pT3a  |
| N (Lymph node metastasis):   | pN1   |
| M (Distant metastasis):      | pM1   |
| Storage:                     | Store frozen tissue blocks at -80°C.  |
| Stability:                   | Frozen tissue blocks are stable for at least one year from date of shipping when stored at -80°C. |

**Product images:**

4x Image



20x Image