

Product datasheet for **CB616404**

Frozen Tissue Blocks, Prostate

Product data:

Product Type:	Frozen Blocks
Disease State:	Other Disease
Diagnosis Category:	Prostatitis
Tissue:	Prostate
Frozen Sample ID:	FR5B335DA2
Case ID:	CU0000005174
Tissue of Origin:	Prostate
Site of Finding:	Prostate
Appearance:	Lesion
Sample Diagnosis (from Pathology Verification):	Prostatitis
Normal:	50%
Lesional:	50%
Tumor:	0%
Tumor Hypo/Acellular Stroma:	0%
Tumor Hypercellular Stroma:	0%
Necrosis:	0%
Pathology Verification notes from H&E review:	35% epithelium, 65% fibromuscular stroma
CASE Diagnosis (from medical center path report):	Adenocarcinoma of prostate
Age:	71
Gender:	Male
Tumor Grade:	n/a



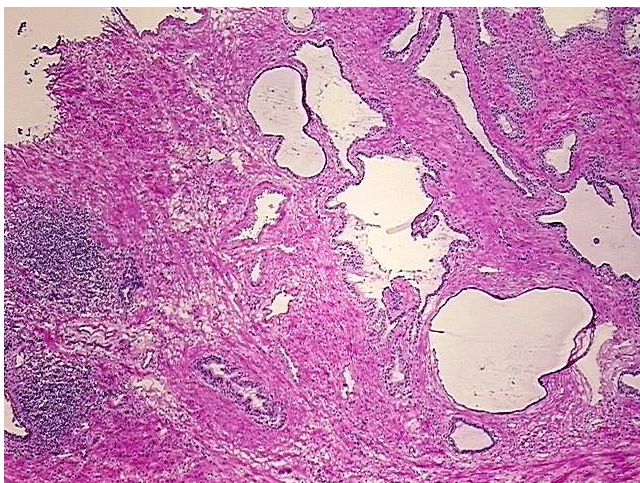
[View online »](#)

Minimum Stage Grouping: n/a

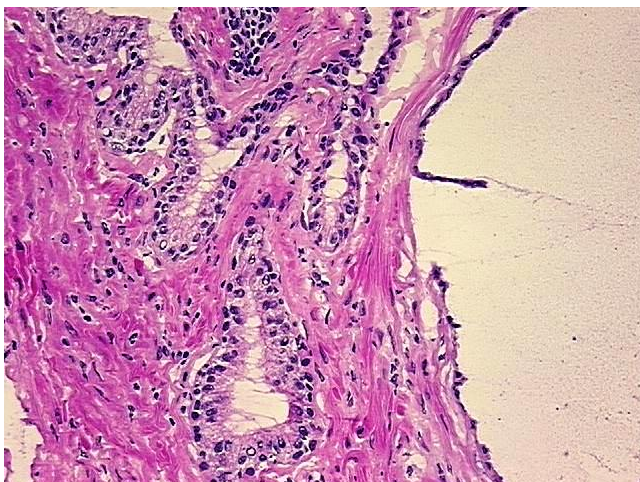
Storage: Store frozen tissue blocks at -80°C.

Stability: Frozen tissue blocks are stable for at least one year from date of shipping when stored at -80°C.

Product images:



4x Image



20x Image