

Product datasheet for **CB614515**

Frozen Tissue Blocks, Stomach

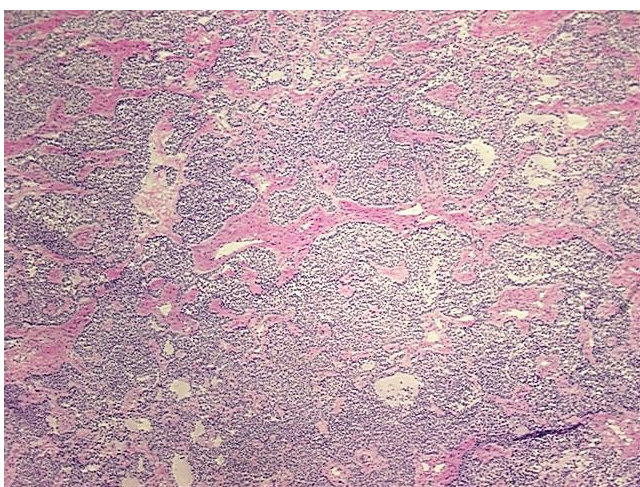
Product data:

| | |
|---|---|
| Product Type: | Frozen Blocks |
| Disease State: | Cancer |
| Diagnosis Category: | Stomach Cancer |
| Tissue: | Stomach |
| Frozen Sample ID: | FR5B31F91A |
| Case ID: | CU0000005014 |
| Tissue of Origin: | Stomach |
| Site of Finding: | Stomach |
| Appearance: | Tumor |
| Sample Diagnosis (from Pathology Verification): | Tumor of stomach, carcinoid |
| Normal: | 20% |
| Lesional: | 0% |
| Tumor: | 80% |
| Tumor Hypo/Acellular Stroma: | 0% |
| Tumor Hypercellular Stroma: | 0% |
| Necrosis: | 0% |
| Pathology Verification notes from H&E review: | Normal: 20% muscle; Tumor infiltrating muscular wall of stomach |
| CASE Diagnosis (from medical center path report): | Tumor of stomach, carcinoid |
| Age: | 51 |
| Gender: | Male |
| Tumor Grade: | Not Reported |

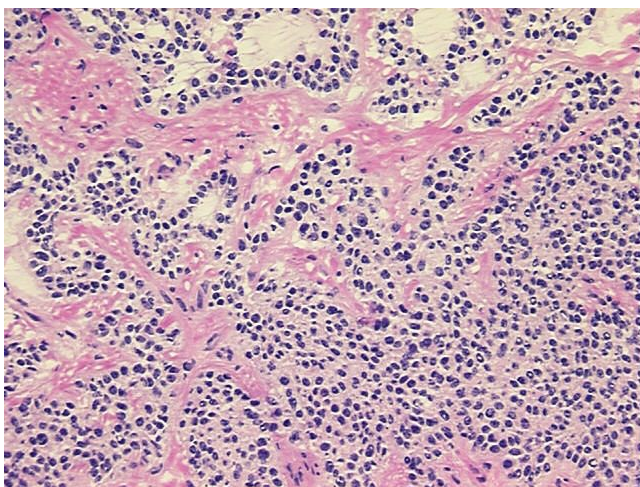


[View online »](#)

| | |
|------------------------------|---|
| Minimum Stage Grouping: | IV |
| T (Extent of Primary Tumor): | pT4 |
| N (Lymph node metastasis): | pN1 |
| M (Distant metastasis): | pM1 |
| Storage: | Store frozen tissue blocks at -80°C. |
| Stability: | Frozen tissue blocks are stable for at least one year from date of shipping when stored at -80°C. |

Product images:

4x Image



20x Image