

Product datasheet for **CB613625**

Frozen Tissue Blocks, Neural tissue

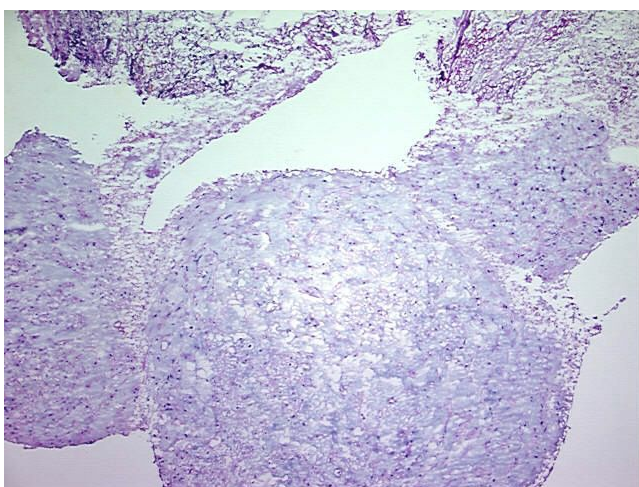
Product data:

Product Type:	Frozen Blocks
Disease State:	Cancer
Diagnosis Category:	Chordoma
Tissue:	Neural tissue
Frozen Sample ID:	FR00007C82
Case ID:	CU0000001934
Tissue of Origin:	Neural tissue
Site of Finding:	Presacral region
Appearance:	Tumor
Sample Diagnosis (from Pathology Verification):	Chordoma
Normal:	65%
Lesional:	0%
Tumor:	35%
Tumor Hypo/Acellular Stroma:	0%
Tumor Hypercellular Stroma:	0%
Necrosis:	0%
Pathology Verification notes from H&E review:	malignant sacral chordoma with perivertebral fibrous tissue
CASE Diagnosis (from medical center path report):	Chordoma
Age:	66
Gender:	Male
Tumor Grade:	Not Reported

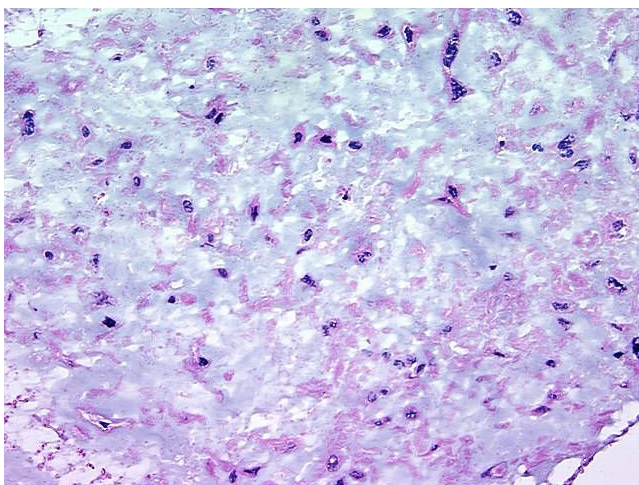


[View online »](#)

Minimum Stage Grouping:	IB
T (Extent of Primary Tumor):	pT2
N (Lymph node metastasis):	pNX
M (Distant metastasis):	pMX
Storage:	Store frozen tissue blocks at -80°C.
Stability:	Frozen tissue blocks are stable for at least one year from date of shipping when stored at -80°C.

Product images:

4x Image



20x Image