

Product datasheet for **CB611380**

Frozen Tissue Blocks, Pleura

Product data:

Product Type:	Frozen Blocks
Disease State:	Cancer
Diagnosis Category:	Mesothelioma
Tissue:	Pleura
Frozen Sample ID:	FR00006A3D
Case ID:	CU0000001690
Tissue of Origin:	Pleura
Site of Finding:	Pleura
Appearance:	Tumor
Sample Diagnosis (from Pathology Verification):	Mesothelioma of pleura
Normal:	0%
Lesional:	0%
Tumor:	35%
Tumor Hypo/Acellular Stroma:	65%
Tumor Hypercellular Stroma:	0%
Necrosis:	0%
CASE Diagnosis (from medical center path report):	Mesothelioma of pleura
Age:	86
Gender:	Male
Tumor Grade:	Not Reported
Minimum Stage Grouping:	Not Reported



[View online »](#)

T (Extent of Primary Tumor): pTX

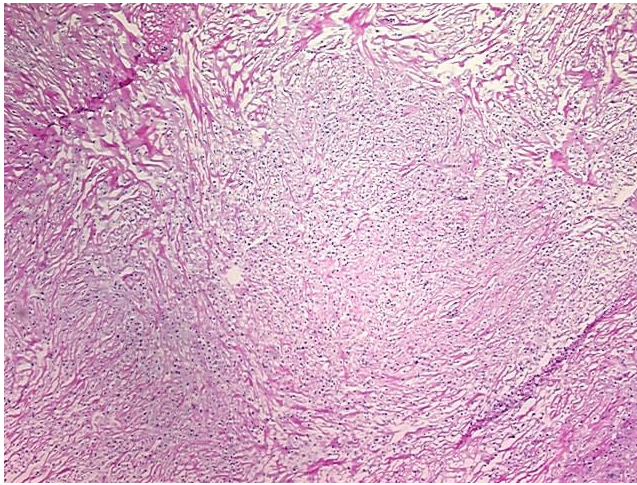
N (Lymph node metastasis): pNX

M (Distant metastasis): pMX

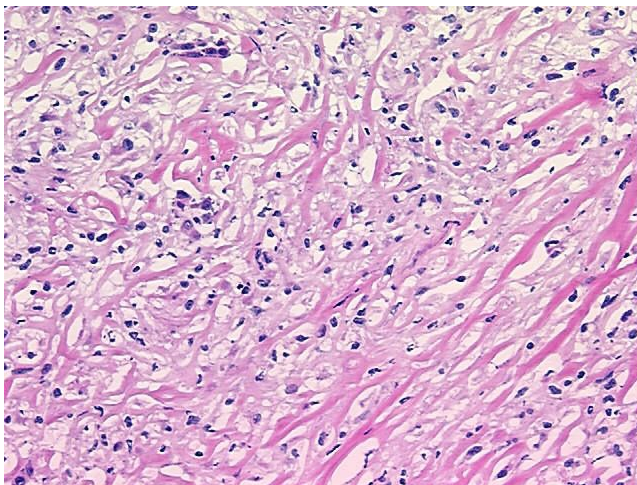
Storage: Store frozen tissue blocks at -80°C.

Stability: Frozen tissue blocks are stable for at least one year from date of shipping when stored at -80°C.

Product images:



4x Image



20x Image