

Product datasheet for **CB611272**

Frozen Tissue Blocks, Kidney

Product data:

| | |
|---|---|
| Product Type: | Frozen Blocks |
| Disease State: | Cancer |
| Diagnosis Category: | Renal Cell Carcinoma |
| Tissue: | Kidney |
| Frozen Sample ID: | FR000068CB |
| Case ID: | CU0000001680 |
| Tissue of Origin: | Kidney |
| Site of Finding: | Lung |
| Appearance: | Tumor |
| Sample Diagnosis (from Pathology Verification): | Carcinoma of kidney, renal cell, clear cell, metastatic |
| Normal: | 0% |
| Lesional: | 0% |
| Tumor: | 60% |
| Tumor Hypo/Acellular Stroma: | 0% |
| Tumor Hypercellular Stroma: | 40% |
| Necrosis: | 0% |
| CASE Diagnosis (from medical center path report): | Carcinoma of kidney, renal cell, clear cell, metastatic |
| Age: | 56 |
| Gender: | Male |
| Tumor Grade: | Not Reported |
| Minimum Stage Grouping: | IV |



[View online »](#)

T (Extent of Primary Tumor): pTX

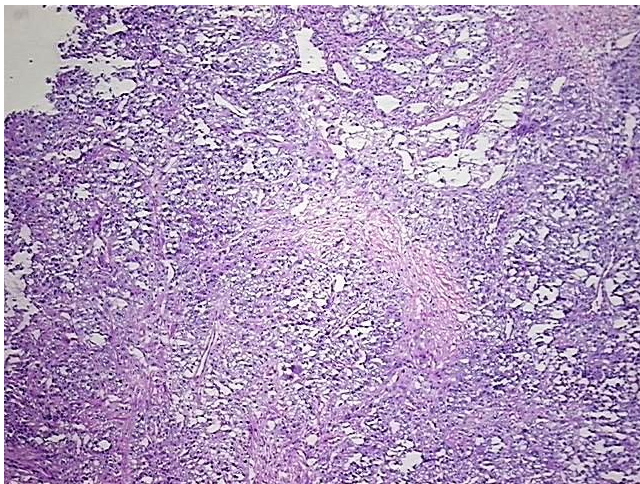
N (Lymph node metastasis): pN1

M (Distant metastasis): pM1

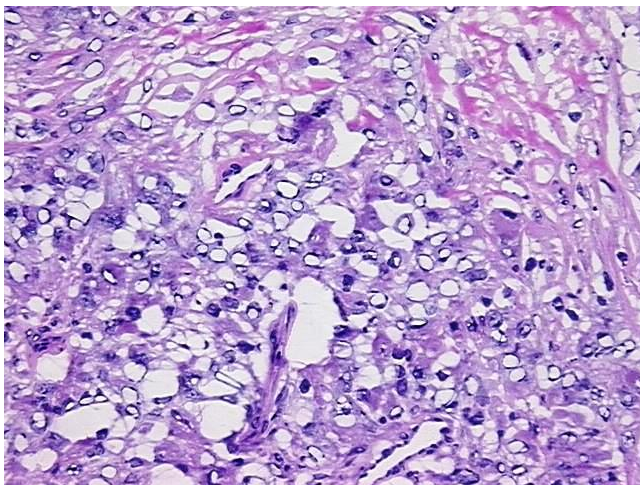
Storage: Store frozen tissue blocks at -80°C.

Stability: Frozen tissue blocks are stable for at least one year from date of shipping when stored at -80°C.

Product images:



4x Image



20x Image