

## Product datasheet for **CB610749**

### Frozen Tissue Blocks, Pleura

#### Product data:

Product Type:	Frozen Blocks
Disease State:	Cancer
Diagnosis Category:	Mesothelioma
Tissue:	Pleura
Frozen Sample ID:	FR00006328
Case ID:	CU0000001629
Tissue of Origin:	Pleura
Site of Finding:	Pleura
Appearance:	Tumor
Sample Diagnosis (from Pathology Verification):	Mesothelioma of pleura
Normal:	0%
Lesional:	0%
Tumor:	55%
Tumor Hypo/Acellular Stroma:	10%
Tumor Hypercellular Stroma:	35%
Necrosis:	0%
CASE Diagnosis (from medical center path report):	Mesothelioma of pleura
Age:	66
Gender:	Male
Tumor Grade:	Not Reported
Minimum Stage Grouping:	II



[View online »](#)

T (Extent of Primary Tumor): pT2

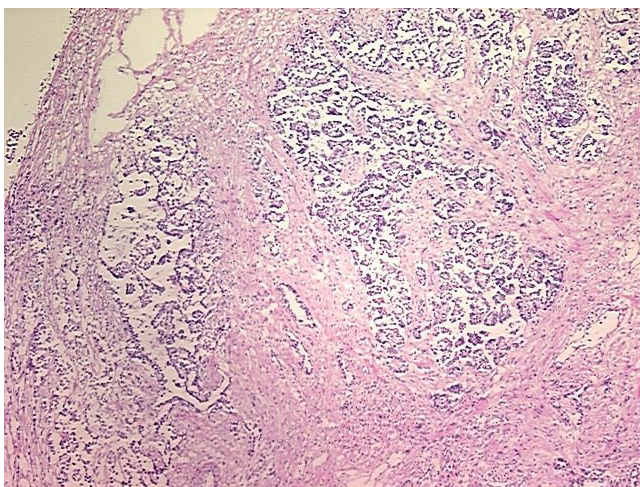
N (Lymph node metastasis): pN0

M (Distant metastasis): pMX

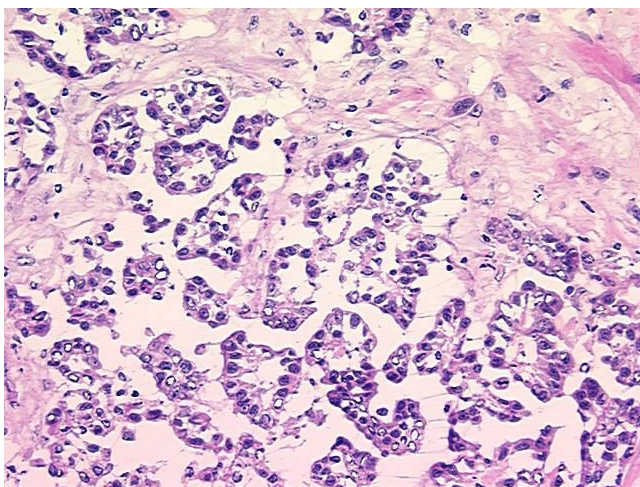
Storage: Store frozen tissue blocks at -80°C.

Stability: Frozen tissue blocks are stable for at least one year from date of shipping when stored at -80°C.

### Product images:



4x Image



20x Image