

Product datasheet for **CB609645**

Frozen Tissue Blocks, Metastasis, unknown source

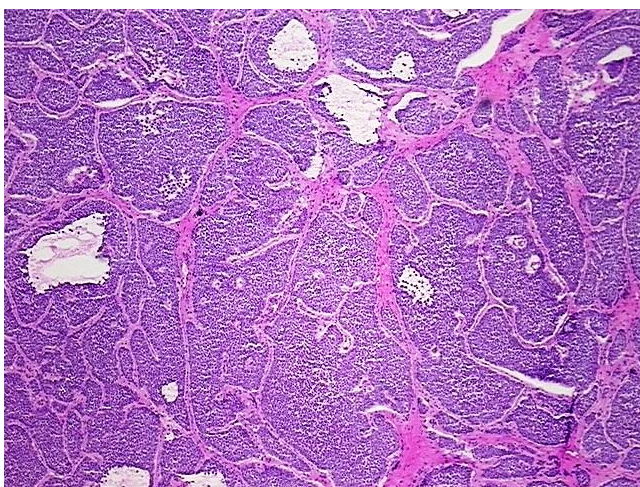
Product data:

Product Type:	Frozen Blocks
Disease State:	Cancer
Tissue:	Unknown tissue
Frozen Sample ID:	FR0000557C
Case ID:	CU0000001507
Tissue of Origin:	Metastasis, unknown source
Site of Finding:	Liver
Appearance:	Tumor
Sample Diagnosis (from Pathology Verification):	Tumor of unknown origin, carcinoid, metastatic
Normal:	0%
Lesional:	10%
Tumor:	80%
Tumor Hypo/Acellular Stroma:	0%
Tumor Hypercellular Stroma:	10%
Necrosis:	0%
Pathology Verification notes from H&E review:	Lesional component contains 10% hepatocytes with inflammation; Tumor component contains typical features consistent with carcinoid tumor. The rarity of the primary carcinoid tumor of liver and the multiple nodules of the tumor make the diagnosis of the
CASE Diagnosis (from medical center path report):	Tumor of unknown origin, carcinoid, metastatic
Age:	81
Gender:	Male
Tumor Grade:	Not Reported

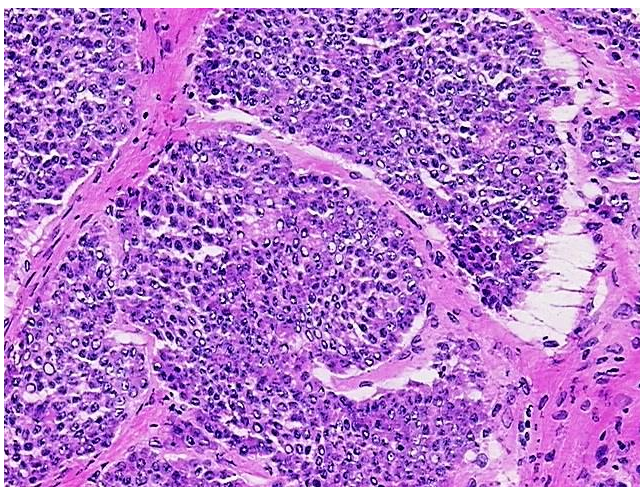


[View online »](#)

Minimum Stage Grouping:	IV
T (Extent of Primary Tumor):	pTX
N (Lymph node metastasis):	pNX
M (Distant metastasis):	pM1
Storage:	Store frozen tissue blocks at -80°C.
Stability:	Frozen tissue blocks are stable for at least one year from date of shipping when stored at -80°C.

Product images:

4x Image



20x Image