

## Product datasheet for **CB609643**

### Frozen Tissue Blocks, Metastasis, unknown source

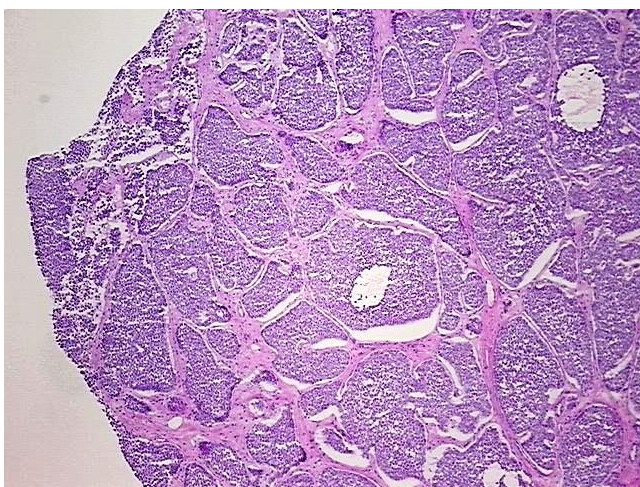
#### Product data:

Product Type:	Frozen Blocks
Disease State:	Cancer
Tissue:	Unknown tissue
Frozen Sample ID:	FR00005579
Case ID:	CU0000001507
Tissue of Origin:	Metastasis, unknown source
Site of Finding:	Liver
Appearance:	Tumor
Sample Diagnosis (from Pathology Verification):	Tumor of unknown origin, carcinoid, metastatic
Normal:	0%
Lesional:	5%
Tumor:	85%
Tumor Hypo/Acellular Stroma:	0%
Tumor Hypercellular Stroma:	10%
Necrosis:	0%
Pathology Verification notes from H&E review:	Lesional component contains residual hepatocytes with inflammation; Tumor component contains typical features consistent with carcinoid tumor. The rarity of the primary carcinoid tumor of liver and the multiple nodules of the tumor make the diagnosis o
CASE Diagnosis (from medical center path report):	Tumor of unknown origin, carcinoid, metastatic
Age:	81
Gender:	Male
Tumor Grade:	Not Reported

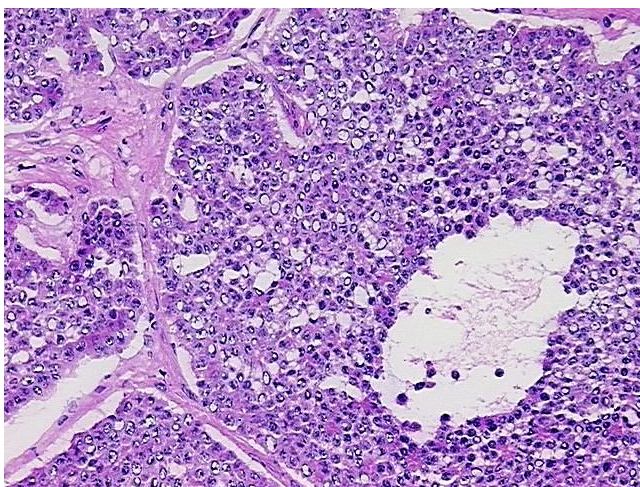


[View online »](#)

Minimum Stage Grouping:	IV
T (Extent of Primary Tumor):	pTX
N (Lymph node metastasis):	pNX
M (Distant metastasis):	pM1
Storage:	Store frozen tissue blocks at -80°C.
Stability:	Frozen tissue blocks are stable for at least one year from date of shipping when stored at -80°C.

**Product images:**

4x Image



20x Image