

Product datasheet for **CB609467**

Frozen Tissue Blocks, Bile duct

Product data:

Product Type:	Frozen Blocks
Disease State:	Cancer
Tissue:	Bile duct
Frozen Sample ID:	FR00005438
Case ID:	CU0000001493
Tissue of Origin:	Bile duct
Site of Finding:	Pancreas
Appearance:	Tumor
Sample Diagnosis (from Pathology Verification):	Cholangiocarcinoma of bile duct
Normal:	0%
Lesional:	0%
Tumor:	45%
Tumor Hypo/Acellular Stroma:	0%
Tumor Hypercellular Stroma:	25%
Necrosis:	30%
CASE Diagnosis (from medical center path report):	Cholangiocarcinoma of bile duct
Age:	76
Gender:	Male
Tumor Grade:	AJCC G3: Poorly differentiated
Minimum Stage Grouping:	IIA



[View online »](#)

T (Extent of Primary Tumor): pT3

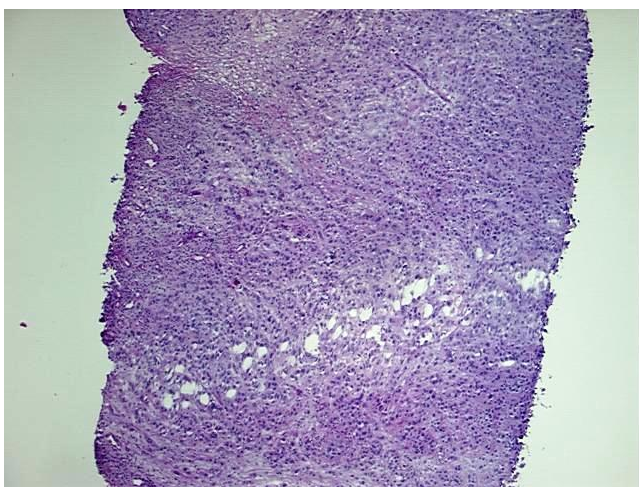
N (Lymph node metastasis): pN0

M (Distant metastasis): pMX

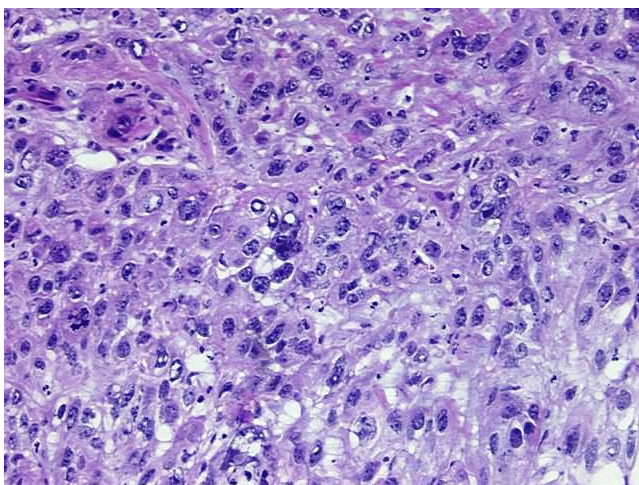
Storage: Store frozen tissue blocks at -80°C.

Stability: Frozen tissue blocks are stable for at least one year from date of shipping when stored at -80°C.

Product images:



4x Image



20x Image