

Product datasheet for **CB609080**

Frozen Tissue Blocks, Prostate

Product data:

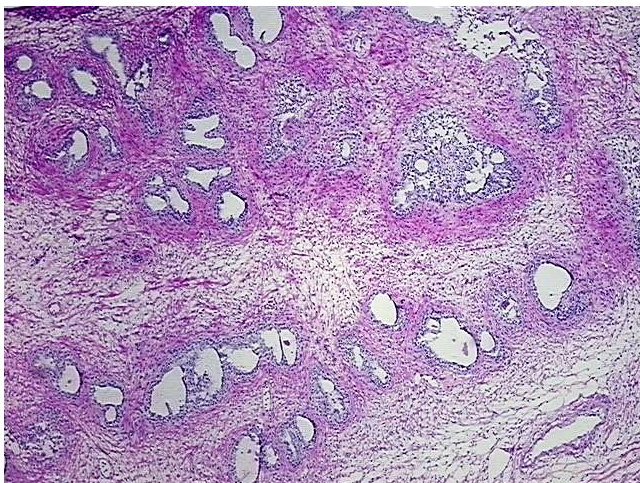
Product Type:	Frozen Blocks
Disease State:	Other Disease
Diagnosis Category:	Prostatitis
Tissue:	Prostate
Frozen Sample ID:	FR00004E03
Case ID:	CU0000001447
Tissue of Origin:	Prostate
Site of Finding:	Prostate
Appearance:	Lesion
Sample Diagnosis (from Pathology Verification):	Prostatitis, chronic
Normal:	0%
Lesional:	100%
Tumor:	0%
Tumor Hypo/Acellular Stroma:	0%
Tumor Hypercellular Stroma:	0%
Necrosis:	0%
Pathology Verification notes from H&E review:	40% epithelium, 60% fibromuscular stroma; contains prominent (5%) lymphoplasmacytic infiltrate
CASE Diagnosis (from medical center path report):	Prostatitis, chronic
Age:	76
Gender:	Male
Storage:	Store frozen tissue blocks at -80°C.



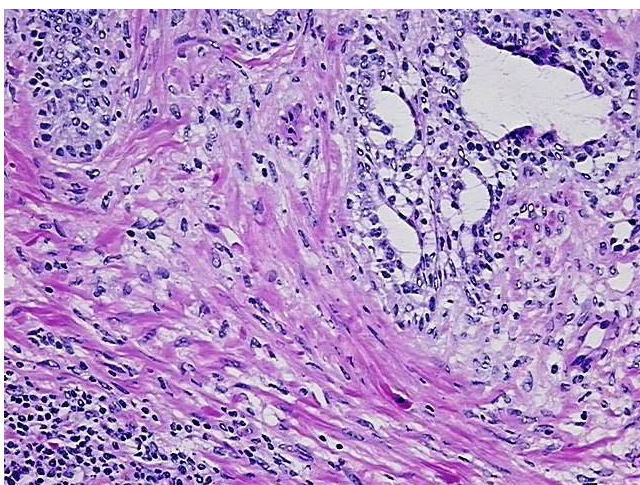
[View online »](#)

Stability: Frozen tissue blocks are stable for at least one year from date of shipping when stored at -80°C.

Product images:



4x Image



20x Image