

Product datasheet for **CB609057**

Frozen Tissue Blocks, Breast

Product data:

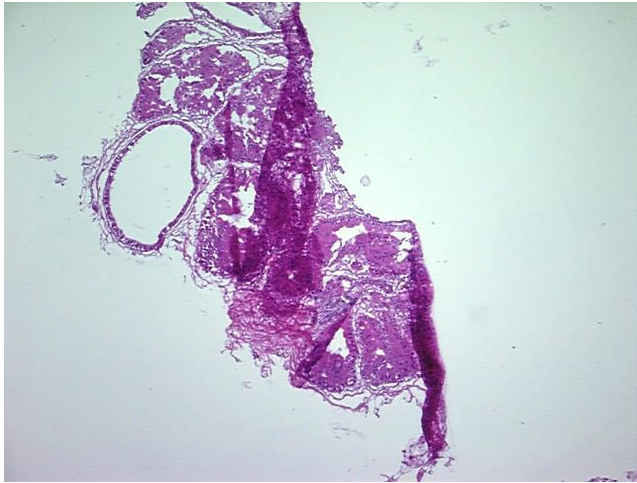
Product Type:	Frozen Blocks
Disease State:	Other Disease
Diagnosis Category:	Metaplasia
Tissue:	Breast
Frozen Sample ID:	FR000048DA
Case ID:	CU0000001441
Tissue of Origin:	Breast
Site of Finding:	Breast
Appearance:	Lesion
Sample Diagnosis (from Pathology Verification):	Apocrine metaplasia of breast
Normal:	0%
Lesional:	100%
Tumor:	0%
Tumor Hypo/Acellular Stroma:	0%
Tumor Hypercellular Stroma:	0%
Necrosis:	0%
Pathology Verification notes from H&E review:	35% glandular epithelium, 65% fibrofatty stroma
CASE Diagnosis (from medical center path report):	No pathologic disease
Age:	46
Gender:	Female
Storage:	Store frozen tissue blocks at -80°C.



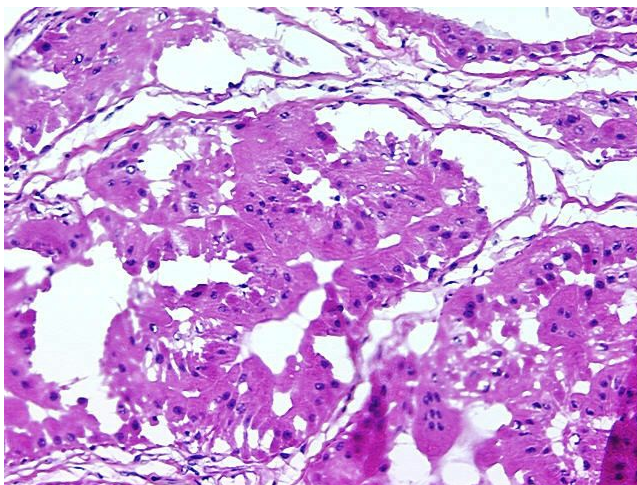
[View online »](#)

Stability: Frozen tissue blocks are stable for at least one year from date of shipping when stored at -80°C.

Product images:



4x Image



20x Image