

Product datasheet for **CB605035**

Frozen Tissue Blocks, Pancreas

Product data:

| | |
|---|--|
| Product Type: | Frozen Blocks |
| Disease State: | Cancer |
| Diagnosis Category: | Carcinoid/Neuroendocrine Tumors |
| Tissue: | Pancreas |
| Frozen Sample ID: | FR000030C4 |
| Case ID: | CU0000000943 |
| Tissue of Origin: | Pancreas |
| Site of Finding: | Pancreas |
| Appearance: | Tumor |
| Sample Diagnosis (from Pathology Verification): | Tumor of pancreas, neuroendocrine |
| Normal: | 0% |
| Lesional: | 0% |
| Tumor: | 40% |
| Tumor Hypo/Acellular Stroma: | 60% |
| Tumor Hypercellular Stroma: | 0% |
| Necrosis: | 0% |
| Pathology Verification notes from H&E review: | Tumor hypo/acellular stroma contains mainly fibrous and amorphous material |
| CASE Diagnosis (from medical center path report): | Tumor of pancreas, neuroendocrine |
| Age: | 61 |
| Gender: | Female |
| Tumor Grade: | Not Reported |



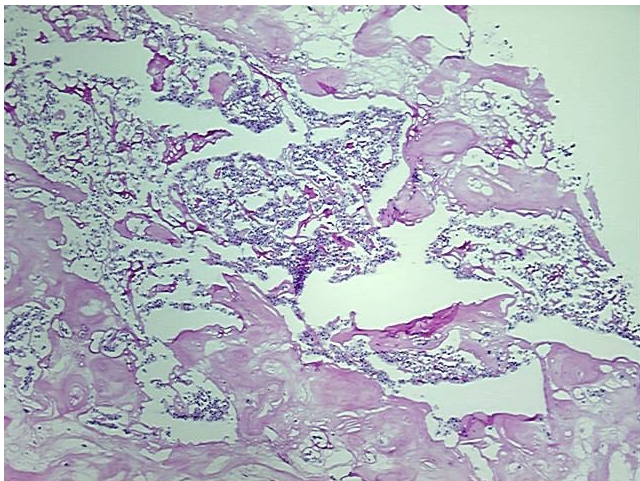
[View online »](#)

Minimum Stage Grouping: Not Reported

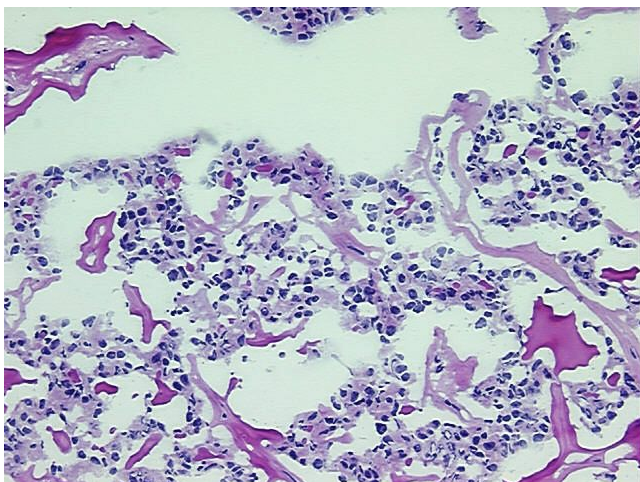
Storage: Store frozen tissue blocks at -80°C.

Stability: Frozen tissue blocks are stable for at least one year from date of shipping when stored at -80°C.

Product images:



4x Image



20x Image