

Product datasheet for **CB605030**

Frozen Tissue Blocks, Pancreas

Product data:

Product Type:	Frozen Blocks
Disease State:	Cancer
Diagnosis Category:	Carcinoid/Neuroendocrine Tumors
Tissue:	Pancreas
Frozen Sample ID:	FR000030BE
Case ID:	CU0000000943
Tissue of Origin:	Pancreas
Site of Finding:	Pancreas
Appearance:	Tumor
Sample Diagnosis (from Pathology Verification):	Tumor of pancreas, neuroendocrine
Normal:	0%
Lesional:	0%
Tumor:	30%
Tumor Hypo/Acellular Stroma:	70%
Tumor Hypercellular Stroma:	0%
Necrosis:	0%
Pathology Verification notes from H&E review:	Tumor hypo/acellular stroma contains mainly fibrous and amorphous material



CASE Diagnosis (from medical center path report): Tumor of pancreas, neuroendocrine

Age: 61

Gender: Female

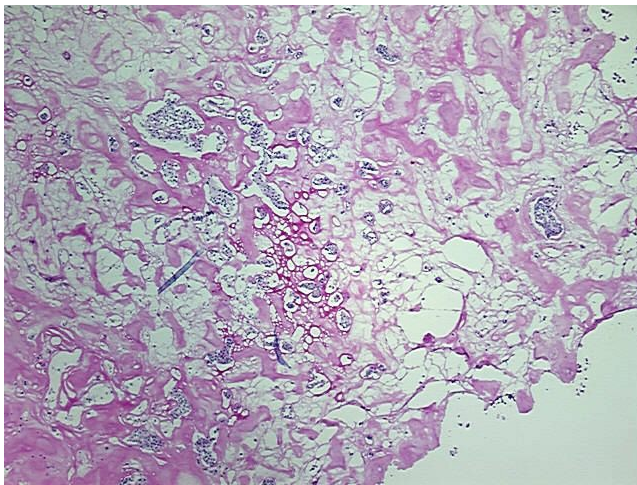
Tumor Grade: Not Reported

Minimum Stage Grouping: Not Reported

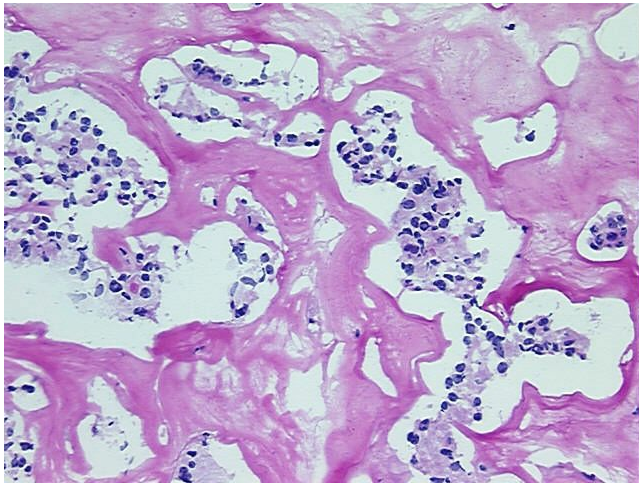
Storage: Store frozen tissue blocks at -80°C .

Stability: Frozen tissue blocks are stable for at least one year from date of shipping when stored at -80°C .

Product images:



4x Image



20x Image