

## Product datasheet for **CB605027**

### Frozen Tissue Blocks, Pancreas

#### Product data:

|   |  |
|---|--|
| Product Type:                                     | Frozen Blocks  |
| Disease State:                                    | Cancer   |
| Diagnosis Category:                               | Carcinoid/Neuroendocrine Tumors  |
| Tissue:   | Pancreas   |
| Frozen Sample ID:                                 | FR000030BA   |
| Case ID:  | CU0000000943   |
| Tissue of Origin:                                 | Pancreas   |
| Site of Finding:                                  | Pancreas   |
| Appearance:                                       | Tumor  |
| Sample Diagnosis (from Pathology Verification):   | Tumor of pancreas, neuroendocrine  |
| Normal:   | 0%   |
| Lesional:   | 0%   |
| Tumor:  | 25%  |
| Tumor Hypo/Acellular Stroma:                      | 75%  |
| Tumor Hypercellular Stroma:                       | 0%   |
| Necrosis:   | 0%   |
| Pathology Verification notes from H&E review:     | Tumor hypo/acellular stroma contains mainly fibrous and amorphous material |
| CASE Diagnosis (from medical center path report): | Tumor of pancreas, neuroendocrine  |
| Age:  | 61   |
| Gender:   | Female   |
| Tumor Grade:                                      | Not Reported   |



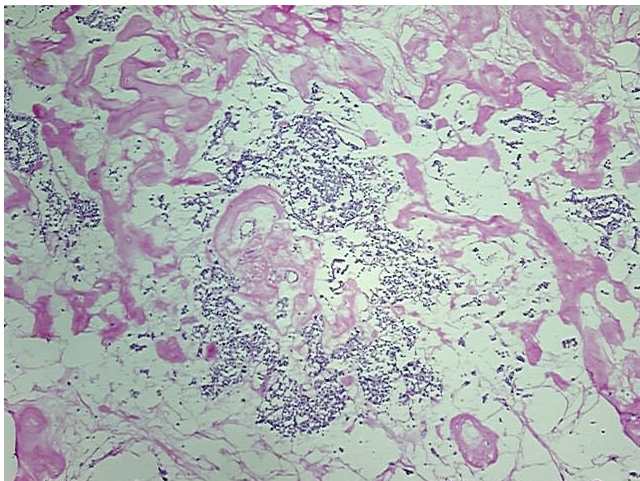
[View online »](#)

Minimum Stage Grouping: Not Reported

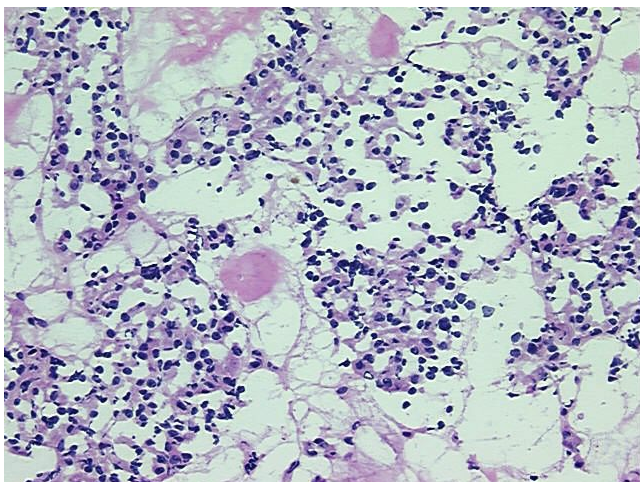
Storage: Store frozen tissue blocks at -80°C.

Stability: Frozen tissue blocks are stable for at least one year from date of shipping when stored at -80°C.

### Product images:



4x Image



20x Image