

Product datasheet for **CB605021**

Frozen Tissue Blocks, Pancreas

Product data:

Product Type:	Frozen Blocks
Disease State:	Cancer
Diagnosis Category:	Carcinoid/Neuroendocrine Tumors
Tissue:	Pancreas
Frozen Sample ID:	FR000030B3
Case ID:	CU0000000943
Tissue of Origin:	Pancreas
Site of Finding:	Pancreas
Appearance:	Tumor
Sample Diagnosis (from Pathology Verification):	Tumor of pancreas, neuroendocrine
Normal:	0%
Lesional:	0%
Tumor:	55%
Tumor Hypo/Acellular Stroma:	40%
Tumor Hypercellular Stroma:	0%
Necrosis:	5%
Pathology Verification notes from H&E review:	Tumor hypo/acellular stroma contains mainly fibrous and amorphous material
CASE Diagnosis (from medical center path report):	Tumor of pancreas, neuroendocrine
Age:	61
Gender:	Female
Tumor Grade:	Not Reported



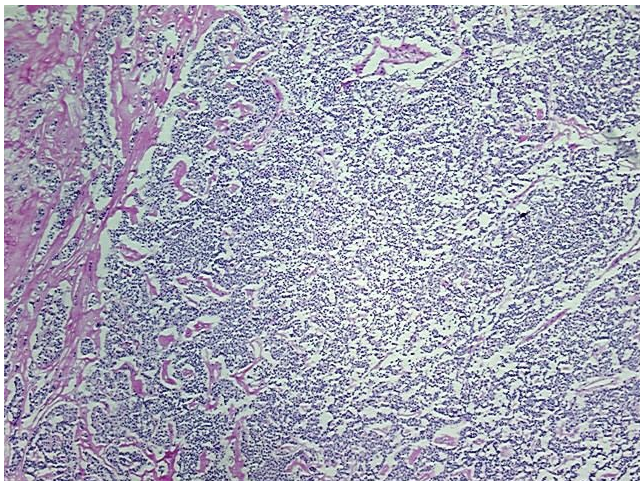
[View online »](#)

Minimum Stage Grouping: Not Reported

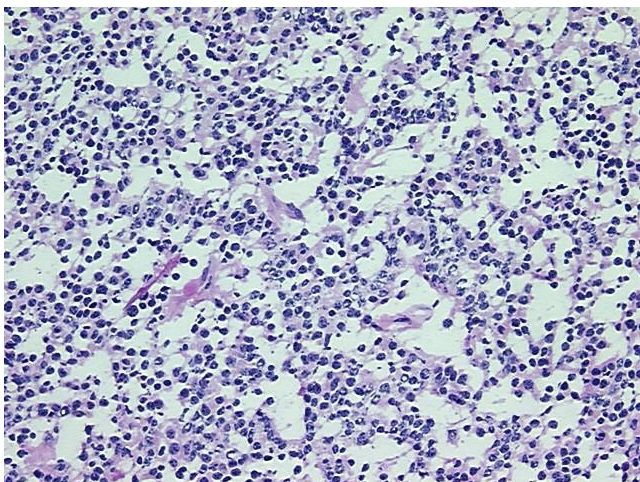
Storage: Store frozen tissue blocks at -80°C.

Stability: Frozen tissue blocks are stable for at least one year from date of shipping when stored at -80°C.

Product images:



4x Image



20x Image