

## Product datasheet for **CB605010**

### Frozen Tissue Blocks, Pancreas

#### Product data:

|  |   |
|--|---|
| <b>Product Type:</b>                                     | Frozen Blocks                           |
| <b>Disease State:</b>                                    | Cancer                                  |
| <b>Diagnosis Category:</b>                               | Carcinoid/Neuroendocrine Tumors         |
| <b>Tissue:</b>   | Pancreas                                |
| <b>Frozen Sample ID:</b>                                 | FR000030A1                              |
| <b>Case ID:</b>  | CU0000000943                            |
| <b>Tissue of Origin:</b>                                 | Pancreas                                |
| <b>Site of Finding:</b>                                  | Pancreas                                |
| <b>Appearance:</b>                                       | Tumor                                   |
| <b>Sample Diagnosis (from Pathology Verification):</b>   | Tumor of pancreas, neuroendocrine       |
| <b>Normal:</b>   | 0%                                      |
| <b>Lesional:</b>   | 0%                                      |
| <b>Tumor:</b>  | 20%                                     |
| <b>Tumor Hypo/Acellular Stroma:</b>                      | 80%                                     |
| <b>Tumor Hypercellular Stroma:</b>                       | 0%                                      |
| <b>Necrosis:</b>   | 0%                                      |
| <b>Pathology Verification notes from H&amp;E review:</b> | Tumor Stroma (Hypo/Acellular): Fibrosis |



[View online »](#)

**CASE Diagnosis (from medical center path report):** Tumor of pancreas, neuroendocrine

**Age:** 61

**Gender:** Female

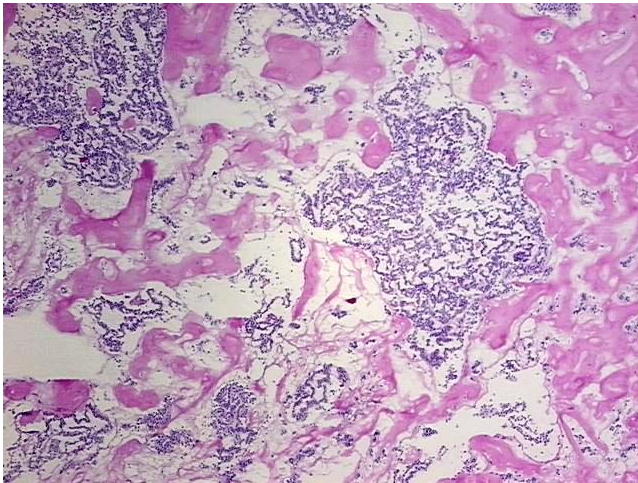
**Tumor Grade:** Not Reported

**Minimum Stage Grouping:** Not Reported

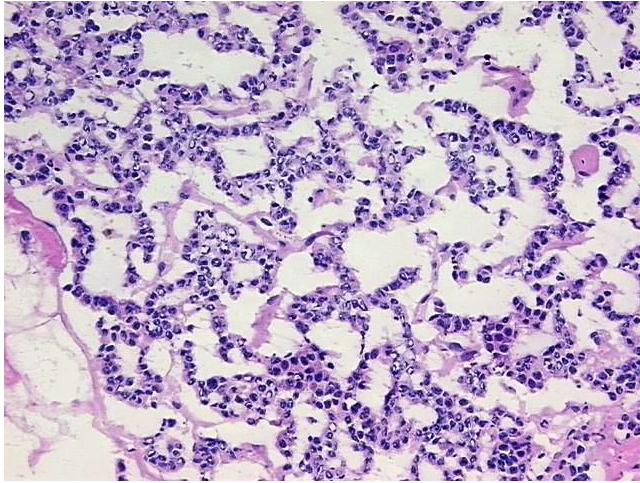
**Storage:** Store frozen tissue blocks at  $-80^{\circ}\text{C}$ .

**Stability:** Frozen tissue blocks are stable for at least one year from date of shipping when stored at  $-80^{\circ}\text{C}$ .

**Product images:**



4x Image



20x Image