

## Product datasheet for **CB602756**

### Frozen Tissue Blocks, Soft tissue

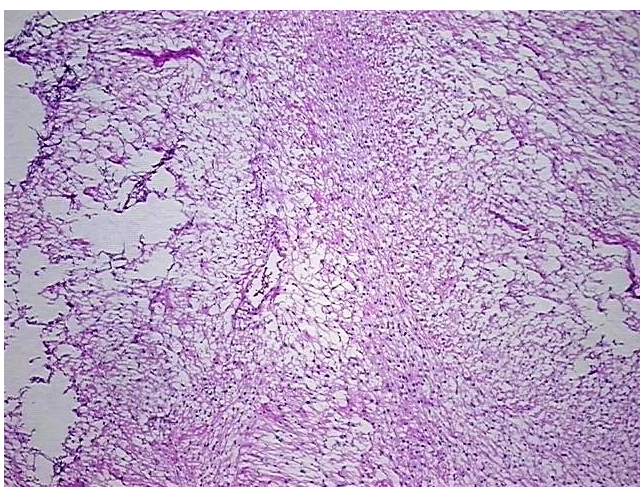
#### Product data:

|   |  |
|---|--|
| Product Type:                                     | Frozen Blocks  |
| Disease State:                                    | Cancer   |
| Diagnosis Category:                               | Sarcoma  |
| Tissue:   | Soft tissue  |
| Frozen Sample ID:                                 | FR00001D4F   |
| Case ID:  | CU0000000701   |
| Tissue of Origin:                                 | Soft tissue  |
| Site of Finding:                                  | Retroperitoneal region   |
| Appearance:                                       | Tumor  |
| Sample Diagnosis (from Pathology Verification):   | Liposarcoma  |
| Normal:   | 0%   |
| Lesional:   | 0%   |
| Tumor:  | 95%  |
| Tumor Hypo/Acellular Stroma:                      | 0%   |
| Tumor Hypercellular Stroma:                       | 0%   |
| Necrosis:   | 5%   |
| Pathology Verification notes from H&E review:     | Tumor consists of spindle cells with many mitoses; Difficult to separate stroma from tumor |
| CASE Diagnosis (from medical center path report): | Liposarcoma  |
| Age:  | 71   |
| Gender:   | Male   |
| Tumor Grade:                                      | AJCC G3: Poorly differentiated   |

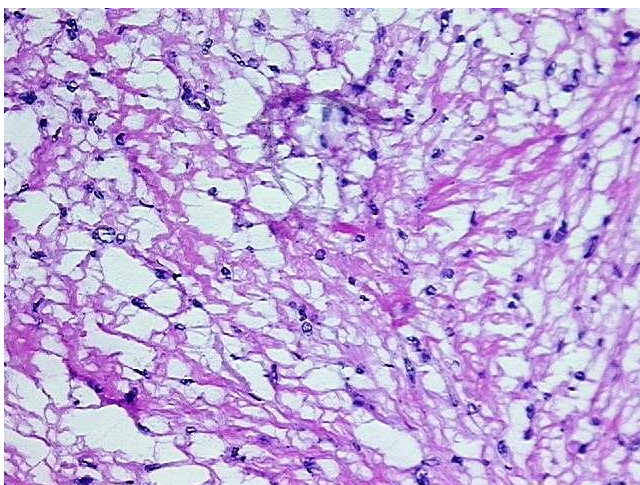


[View online »](#)

|                              |   |
|------------------------------|---|
| Minimum Stage Grouping:      | III   |
| T (Extent of Primary Tumor): | pT2b  |
| N (Lymph node metastasis):   | pNX   |
| M (Distant metastasis):      | pMX   |
| Storage:                     | Store frozen tissue blocks at -80°C.  |
| Stability:                   | Frozen tissue blocks are stable for at least one year from date of shipping when stored at -80°C. |

**Product images:**

4x Image



20x Image