

Product datasheet for **CB600456**

Frozen Tissue Blocks, Metastasis, unknown source

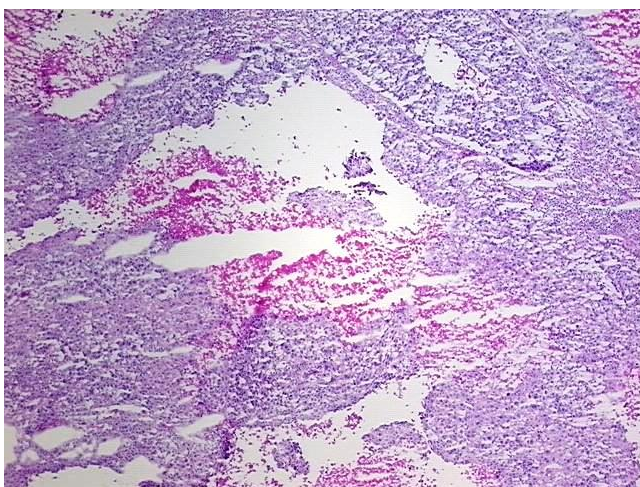
Product data:

Product Type:	Frozen Blocks
Disease State:	Cancer
Tissue:	Unknown tissue
Frozen Sample ID:	FR00000727
Case ID:	CU0000000177
Tissue of Origin:	Metastasis, unknown source
Site of Finding:	Lymph node
Appearance:	Tumor
Sample Diagnosis (from Pathology Verification):	Carcinoma of unknown origin, non-small cell, metastatic
Normal:	0%
Lesional:	0%
Tumor:	50%
Tumor Hypo/Acellular Stroma:	30%
Tumor Hypercellular Stroma:	10%
Necrosis:	10%
Pathology Verification notes from H&E review:	Non-small cell carcinoma metastasized to lymph node
CASE Diagnosis (from medical center path report):	Carcinoma of unknown origin, non-small cell, metastatic
Age:	64
Gender:	Male
Tumor Grade:	AJCC G3: Poorly differentiated

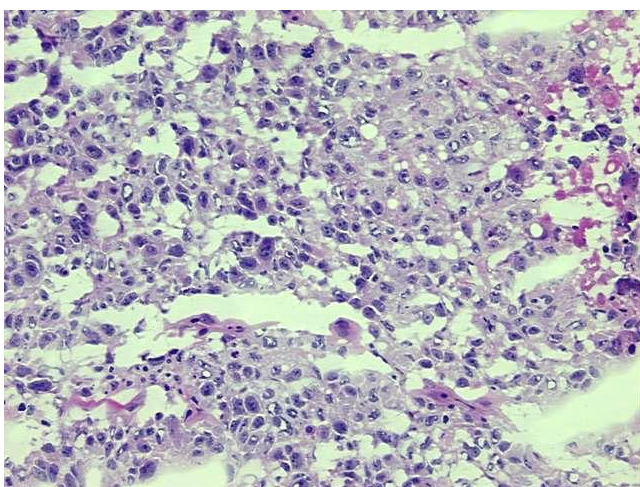


[View online »](#)

Minimum Stage Grouping:	Not Reported
T (Extent of Primary Tumor):	pTX
N (Lymph node metastasis):	pNX
M (Distant metastasis):	pMX
Storage:	Store frozen tissue blocks at -80°C.
Stability:	Frozen tissue blocks are stable for at least one year from date of shipping when stored at -80°C.

Product images:

4x Image



20x Image