

Product datasheet for **CB600201**

Frozen Tissue Blocks, Endometrium

Product data:

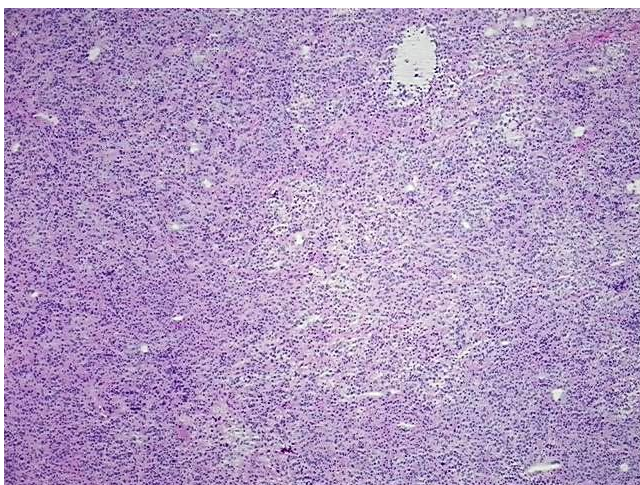
Product Type:	Frozen Blocks
Disease State:	Cancer
Diagnosis Category:	Endometrial Cancer
Tissue:	Endometrium
Frozen Sample ID:	FR00000368
Case ID:	CU0000000090
Tissue of Origin:	Endometrium
Site of Finding:	Uterus
Appearance:	Tumor
Sample Diagnosis (from Pathology Verification):	Carcinoma of endometrium, adenosquamous
Normal:	8%
Lesional:	0%
Tumor:	90%
Tumor Hypo/Acellular Stroma:	0%
Tumor Hypercellular Stroma:	2%
Necrosis:	0%
Pathology Verification notes from H&E review:	Stromal component contains numerous plasma cells
CASE Diagnosis (from medical center path report):	Carcinoma of endometrium, adenosquamous
Age:	65
Gender:	Female
Tumor Grade:	FIGO G3: Poorly differentiated



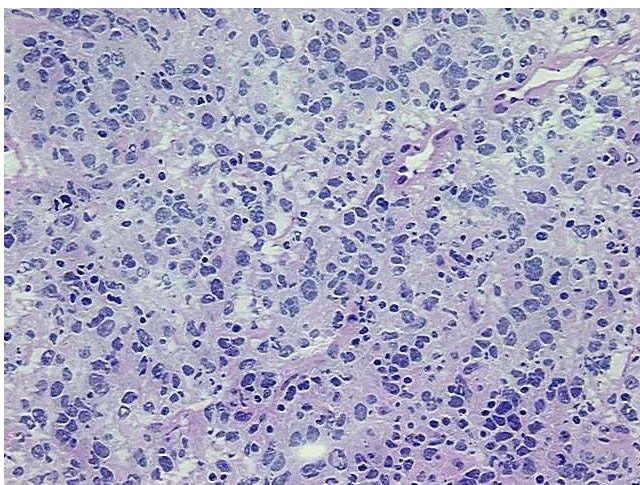
[View online »](#)

Minimum Stage Grouping:	IIIC
T (Extent of Primary Tumor):	pT1a
N (Lymph node metastasis):	pN1
M (Distant metastasis):	pMX
Storage:	Store frozen tissue blocks at -80°C.
Stability:	Frozen tissue blocks are stable for at least one year from date of shipping when stored at -80°C.

Product images:



4x Image



20x Image