

Product datasheet for **CB600168**

Frozen Tissue Blocks, Uterus

Product data:

Product Type:	Frozen Blocks
Disease State:	Normal
Diagnosis Category:	Normal
Tissue:	Uterus
Frozen Sample ID:	FR000004E3
Case ID:	CU0000000077
Tissue of Origin:	Uterus
Site of Finding:	Uterus
Appearance:	Normal
Sample Diagnosis (from Pathology Verification):	Within normal limits
Normal:	99%
Lesional:	0%
Tumor:	0%
Tumor Hypo/Acellular Stroma:	0%
Tumor Hypercellular Stroma:	0%
Necrosis:	1%
Pathology Verification notes from H&E review:	30% Endometrial glands, 10% Endometrial stroma, 60% Myometrium, 1% Luminal debris, Secretory phase endometrium
CASE Diagnosis (from medical center path report):	Adhesion of tissue
Age:	35
Gender:	Female
Tumor Grade:	n/a



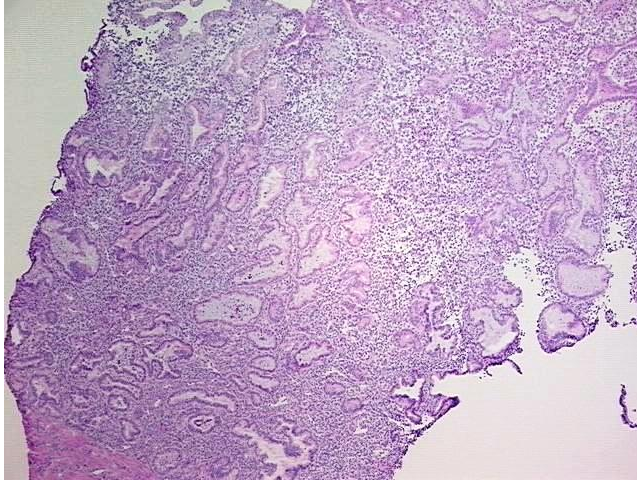
[View online »](#)

Minimum Stage n/a
Grouping:

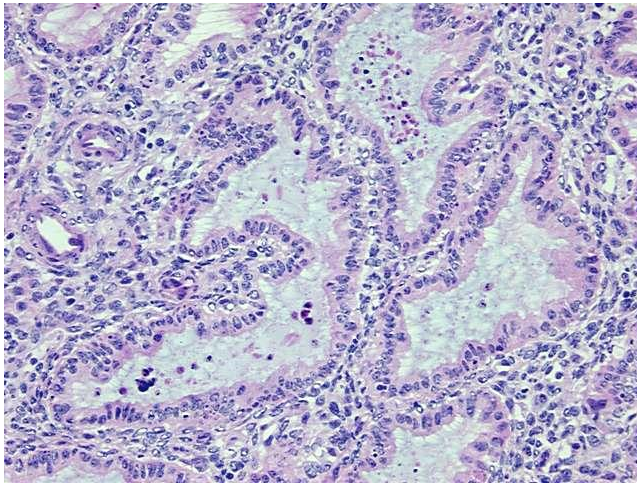
Storage: Store frozen tissue blocks at -80°C.

Stability: Frozen tissue blocks are stable for at least one year from date of shipping when stored at -80°C.

Product images:



4x Image



20x Image