

## Product datasheet for **CB566053**

### Frozen Tissue Blocks, Pancreas

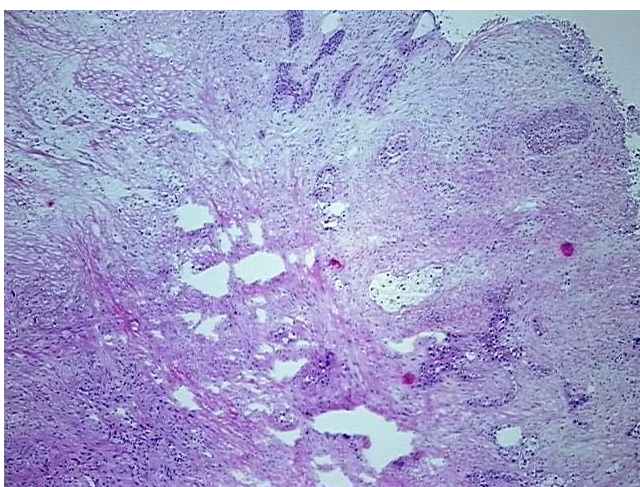
#### Product data:

Product Type:	Frozen Blocks
Disease State:	Cancer
Diagnosis Category:	Pancreatic Cancer
Tissue:	Pancreas
Frozen Sample ID:	FR0003FA3E
Case ID:	CI0000018716
Tissue of Origin:	Pancreas
Site of Finding:	Pancreas
Appearance:	Tumor
Sample Diagnosis (from Pathology Verification):	Carcinoma of pancreas, adenosquamous
Normal:	0%
Lesional:	0%
Tumor:	25%
Tumor Hypo/Acellular Stroma:	0%
Tumor Hypercellular Stroma:	55%
Necrosis:	20%
Pathology Verification notes from H&E review:	Tumor Stroma (Cellular): Desmoplastic reaction; Other Features/Comments: Tumor area: 6 mm x 2 mm
CASE Diagnosis (from medical center path report):	Carcinoma of pancreas, adenosquamous
Age:	65
Gender:	Male
Tumor Grade:	Not Reported

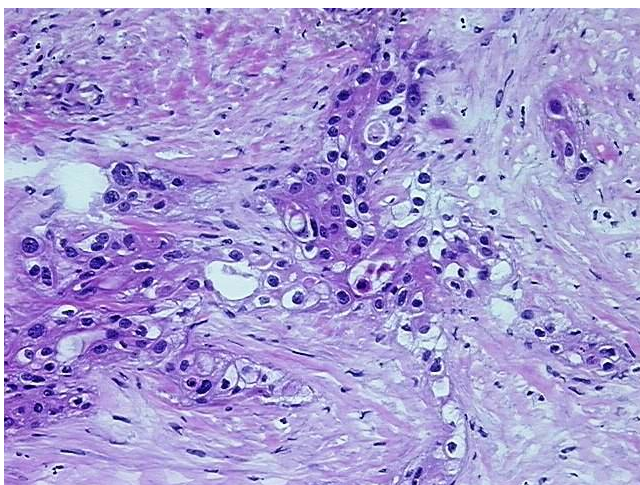


[View online »](#)

Minimum Stage Grouping:	IIB
T (Extent of Primary Tumor):	pT2
N (Lymph node metastasis):	pN1
M (Distant metastasis):	pMX
Storage:	Store frozen tissue blocks at -80°C.
Stability:	Frozen tissue blocks are stable for at least one year from date of shipping when stored at -80°C.

**Product images:**

4x Image



20x Image