

## Product datasheet for **CB557265**

### Frozen Tissue Blocks, Bile duct

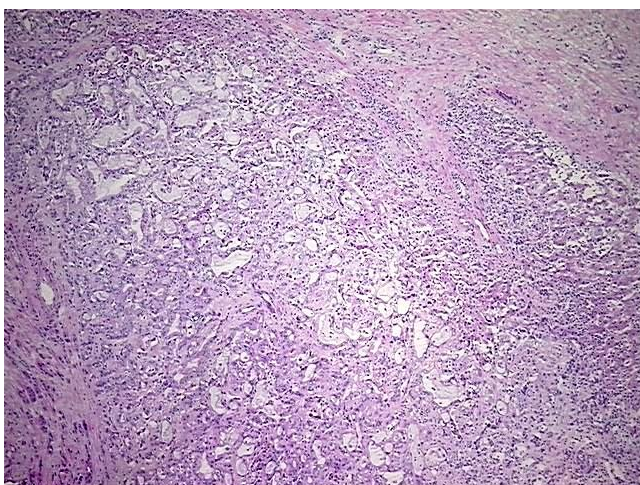
#### Product data:

Product Type:	Frozen Blocks
Disease State:	Cancer
Tissue:	Bile duct
Frozen Sample ID:	FR5B33E3C1
Case ID:	CI7000000098
Tissue of Origin:	Bile duct
Site of Finding:	Liver
Appearance:	Tumor
Sample Diagnosis (from Pathology Verification):	Cholangiocarcinoma of liver
Normal:	60%
Lesional:	0%
Tumor:	25%
Tumor Hypo/Acellular Stroma:	0%
Tumor Hypercellular Stroma:	15%
Necrosis:	0%
Pathology Verification notes from H&E review:	Tumor Stroma (Cellular): Desmoplastic reaction, Inflammatory cells; Inflammation: Mild Lymphoid infiltrate; Non Tumor Structures: 85% Lobules, 15% Triads
CASE Diagnosis (from medical center path report):	Cholangiocarcinoma of liver
Age:	66
Gender:	Female
Tumor Grade:	Not Reported

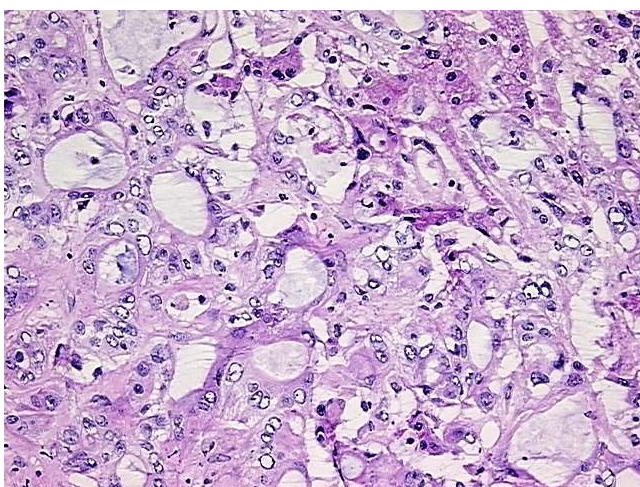


[View online »](#)

Minimum Stage Grouping:	IV
T (Extent of Primary Tumor):	pT1
N (Lymph node metastasis):	pNX
M (Distant metastasis):	pM1
Storage:	Store frozen tissue blocks at -80°C.
Stability:	Frozen tissue blocks are stable for at least one year from date of shipping when stored at -80°C.

**Product images:**

4x Image



20x Image