

Product datasheet for **CB553412**

Frozen Tissue Blocks, Pancreas

Product data:

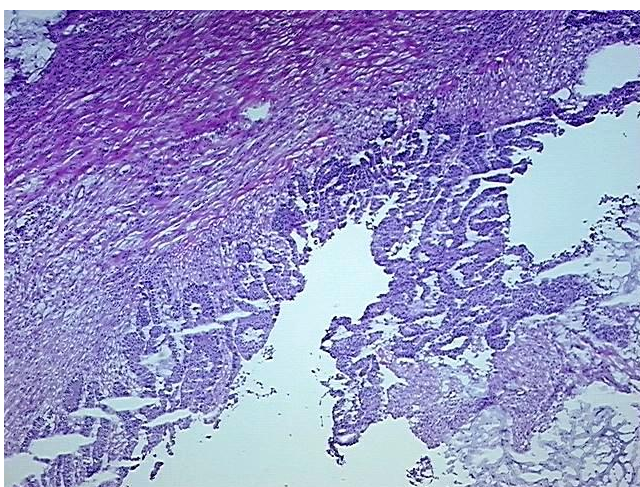
Product Type:	Frozen Blocks
Disease State:	Cancer
Diagnosis Category:	Pancreatic Cancer
Tissue:	Pancreas
Frozen Sample ID:	FR00044F2B
Case ID:	CI0000020380
Tissue of Origin:	Pancreas
Site of Finding:	Pancreas
Appearance:	Tumor
Sample Diagnosis (from Pathology Verification):	Adenocarcinoma of pancreas, mucinous
Normal:	0%
Lesional:	0%
Tumor:	15%
Tumor Hypo/Acellular Stroma:	60%
Tumor Hypercellular Stroma:	25%
Necrosis:	0%
Pathology Verification notes from H&E review:	Tumor Stroma (Cellular): Fibroblastic cells; Tumor Stroma (Hypo/Acellular): Mucin; Inflammation: Mild Mixed inflammatory infiltrate
CASE Diagnosis (from medical center path report):	Adenocarcinoma of pancreas, mucinous
Age:	78
Gender:	Female
Tumor Grade:	AJCC G1: Well differentiated



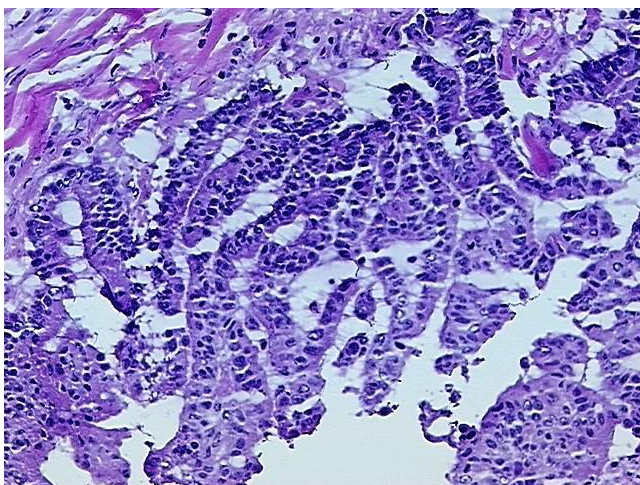
[View online »](#)

Minimum Stage Grouping:	IB
T (Extent of Primary Tumor):	pT2
N (Lymph node metastasis):	pN0
M (Distant metastasis):	pMX
Storage:	Store frozen tissue blocks at -80°C.
Stability:	Frozen tissue blocks are stable for at least one year from date of shipping when stored at -80°C.

Product images:



4x Image



20x Image