

Product datasheet for **CB551012**

Frozen Tissue Blocks, Unknown tissue consistent with neuroendocrine origin

Product data:

Product Type:	Frozen Blocks
Disease State:	Cancer
Diagnosis Category:	Carcinoid/Neuroendocrine Tumors
Tissue:	Unknown tissue
Frozen Sample ID:	FR000435D7
Case ID:	CI0000019738
Tissue of Origin:	Unknown tissue consistent with neuroendocrine origin
Site of Finding:	Liver
Appearance:	Tumor
Sample Diagnosis (from Pathology Verification):	Tumor of unknown origin, neuroendocrine, metastatic
Normal:	0%
Lesional:	0%
Tumor:	45%
Tumor Hypo/Acellular Stroma:	0%
Tumor Hypercellular Stroma:	5%
Necrosis:	50%
Pathology Verification notes from H&E review:	Tumor: pancreas and lung are common sites to consider as a primary site.
CASE Diagnosis (from medical center path report):	Carcinoma of unknown origin, neuroendocrine, metastatic
Age:	26
Gender:	Female
Tumor Grade:	Not Reported



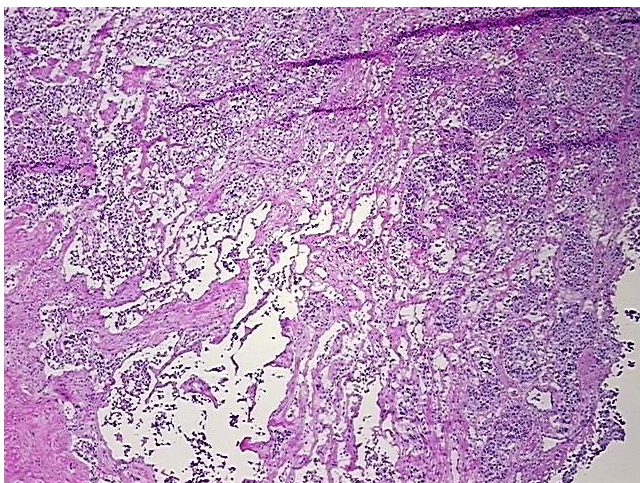
[View online »](#)

Minimum Stage Grouping: Not Reported

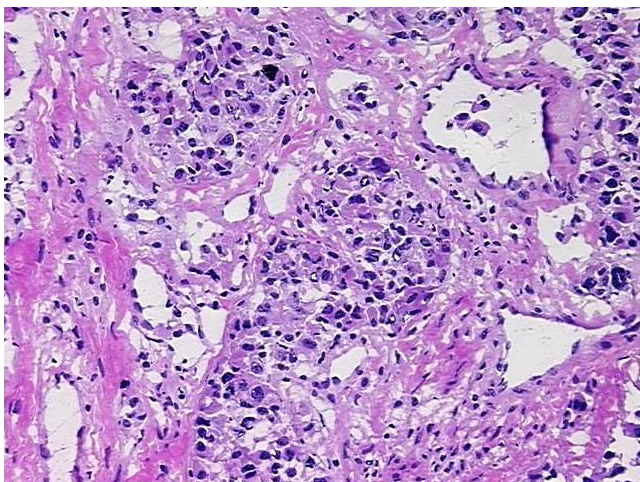
Storage: Store frozen tissue blocks at -80°C.

Stability: Frozen tissue blocks are stable for at least one year from date of shipping when stored at -80°C.

Product images:



4x Image



20x Image