

Product datasheet for **CB549281**

Frozen Tissue Blocks, Breast, left

Product data:

Product Type:	Frozen Blocks
Disease State:	Other Disease
Diagnosis Category:	Metaplasia
Tissue:	Breast
Frozen Sample ID:	FR00041CE5
Case ID:	CI0000019385
Tissue of Origin:	Breast, left
Site of Finding:	Breast, left
Appearance:	Lesion
Sample Diagnosis (from Pathology Verification):	Apocrine metaplasia of breast
Normal:	60%
Lesional:	40%
Tumor:	0%
Tumor Hypo/Acellular Stroma:	0%
Tumor Hypercellular Stroma:	0%
Necrosis:	0%
Pathology Verification notes from H&E review:	10% Glandular epithelium, 30% Stroma, 60% Adipose tissue
CASE Diagnosis (from medical center path report):	Adenocarcinoma of breast, ductal
Age:	45
Gender:	Female
Tumor Grade:	n/a



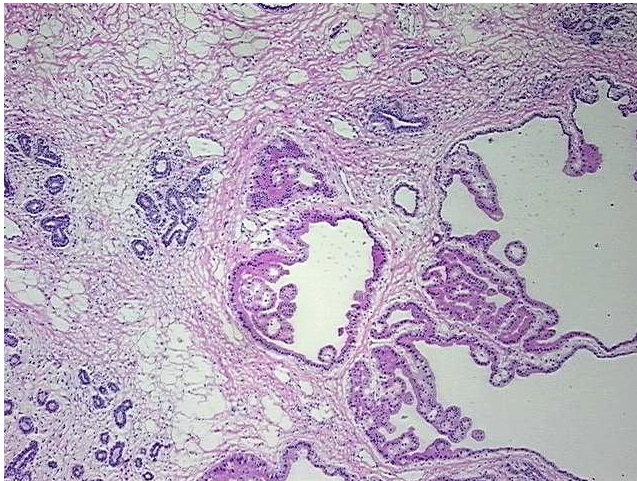
[View online »](#)

Minimum Stage Grouping: n/a

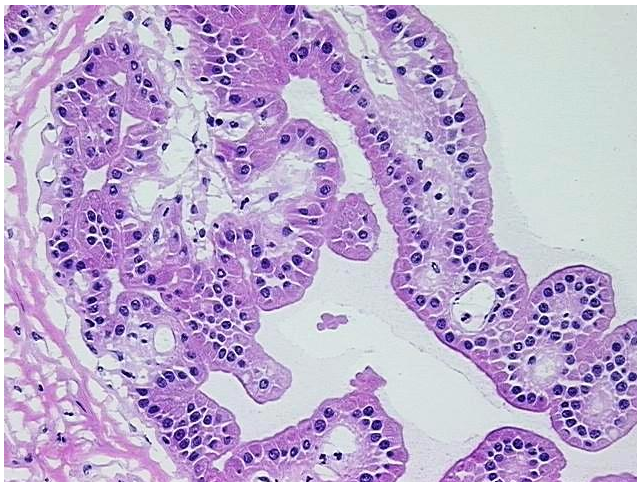
Storage: Store frozen tissue blocks at -80°C.

Stability: Frozen tissue blocks are stable for at least one year from date of shipping when stored at -80°C.

Product images:



4x Image



20x Image