

Product datasheet for **CB548342**

Frozen Tissue Blocks, Unknown tissue

Product data:

| | |
|---|-----------------------------------|
| Product Type: | Frozen Blocks |
| Disease State: | Cancer |
| Diagnosis Category: | Sarcoma |
| Tissue: | Unknown tissue |
| Frozen Sample ID: | FR00044501 |
| Case ID: | CI0000019171 |
| Tissue of Origin: | Unknown tissue |
| Site of Finding: | Lung |
| Appearance: | Tumor |
| Sample Diagnosis (from Pathology Verification): | Sarcoma, spindle cell, metastatic |
| Normal: | 0% |
| Lesional: | 0% |
| Tumor: | 75% |
| Tumor Hypo/Acellular Stroma: | 0% |
| Tumor Hypercellular Stroma: | 10% |
| Necrosis: | 15% |
| CASE Diagnosis (from medical center path report): | Sarcoma, spindle cell, metastatic |
| Age: | 64 |
| Gender: | Female |
| Tumor Grade: | AJCC G4: Undifferentiated |
| Minimum Stage Grouping: | IV |



[View online »](#)

T (Extent of Primary Tumor): pTX

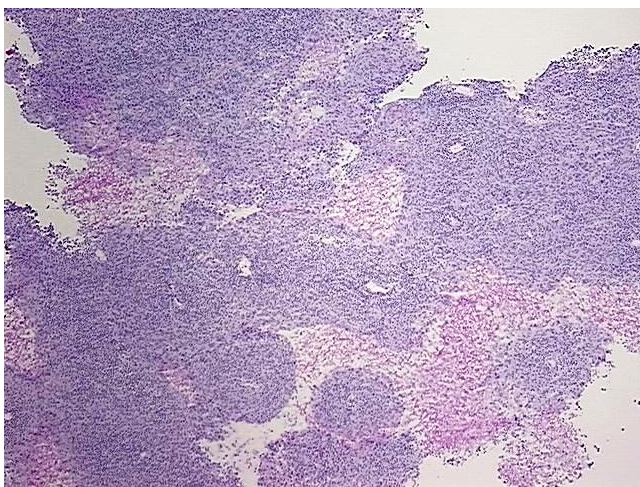
N (Lymph node metastasis): pNX

M (Distant metastasis): pM1

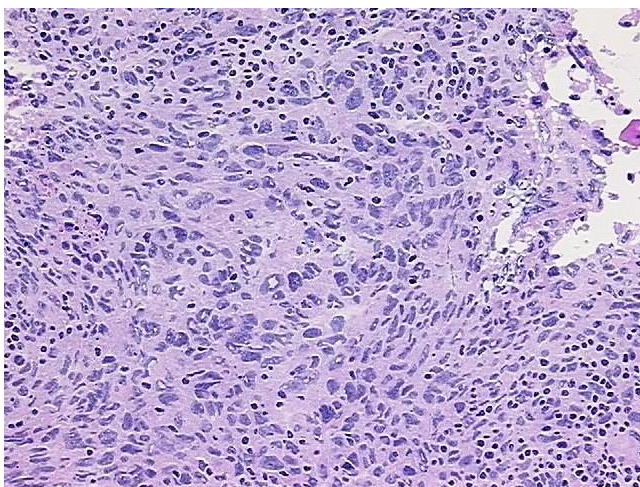
Storage: Store frozen tissue blocks at -80°C.

Stability: Frozen tissue blocks are stable for at least one year from date of shipping when stored at -80°C.

Product images:



4x Image



20x Image