

Product datasheet for **CB547062**

Frozen Tissue Blocks, Bile duct

Product data:

Product Type:	Frozen Blocks
Disease State:	Cancer
Tissue:	Bile duct
Frozen Sample ID:	FR65EE657F
Case ID:	CI0000018940
Tissue of Origin:	Bile duct
Site of Finding:	Liver
Appearance:	Tumor
Sample Diagnosis (from Pathology Verification):	Cholangiocarcinoma of liver
Normal:	0%
Lesional:	0%
Tumor:	50%
Tumor Hypo/Acellular Stroma:	35%
Tumor Hypercellular Stroma:	0%
Necrosis:	15%
CASE Diagnosis (from medical center path report):	Cholangiocarcinoma of liver
Age:	78
Gender:	Female
Tumor Grade:	AJCC G2: Moderately differentiated
Minimum Stage Grouping:	I



[View online »](#)

T (Extent of Primary Tumor): pT1

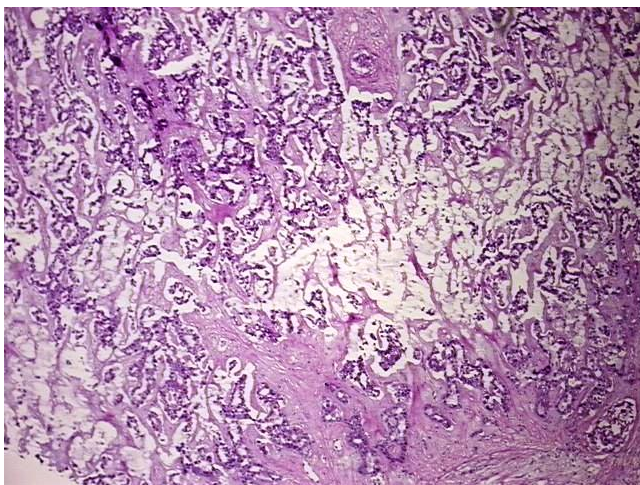
N (Lymph node metastasis): pN0

M (Distant metastasis): pMX

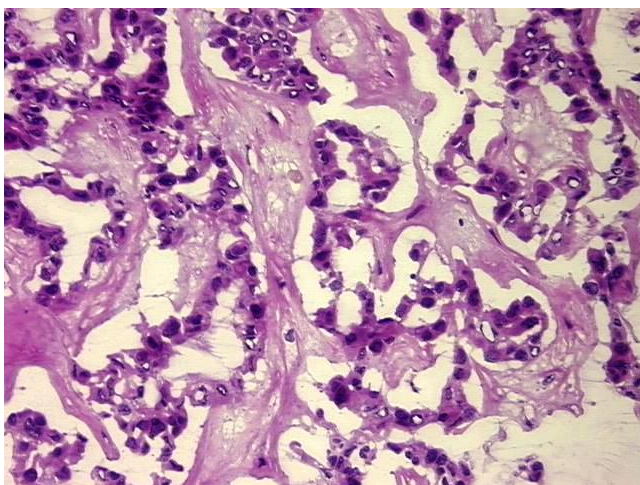
Storage: Store frozen tissue blocks at -80°C.

Stability: Frozen tissue blocks are stable for at least one year from date of shipping when stored at -80°C.

Product images:



4x Image



20x Image