

## Product datasheet for **CB546442**

### Frozen Tissue Blocks, Lung

#### Product data:

Product Type:	Frozen Blocks
Disease State:	Normal
Diagnosis Category:	Normal
Tissue:	Lung
Frozen Sample ID:	FR5B33DE10
Case ID:	CI0000018700
Tissue of Origin:	Lung
Site of Finding:	Lung
Appearance:	Normal
Sample Diagnosis (from Pathology Verification):	Within normal limits
Normal:	100%
Lesional:	0%
Tumor:	0%
Tumor Hypo/Acellular Stroma:	0%
Tumor Hypercellular Stroma:	0%
Necrosis:	0%
Pathology Verification notes from H&E review:	70% Alveoli, 10% Bronchioles, 20% Fibrovascular septa
CASE Diagnosis (from medical center path report):	Malignant melanoma, metastatic
Age:	52
Gender:	Male
Tumor Grade:	n/a



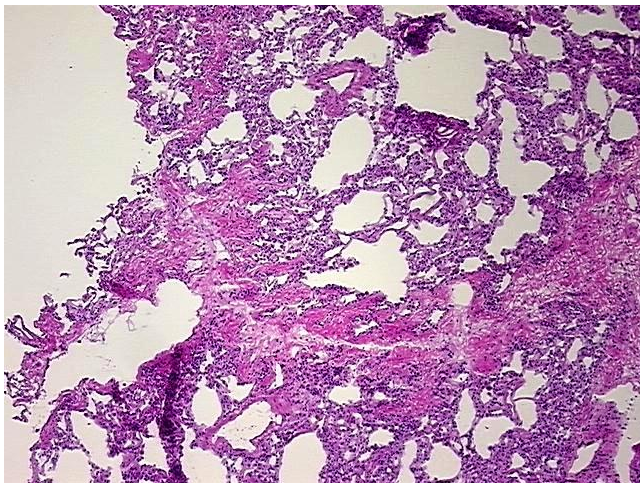
[View online »](#)

Minimum Stage Grouping: n/a

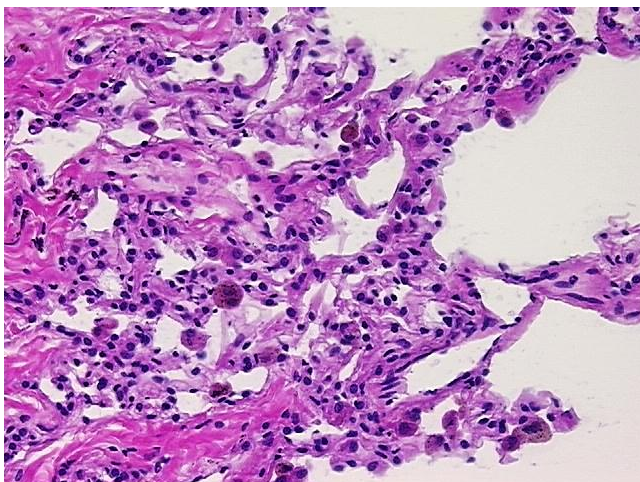
Storage: Store frozen tissue blocks at -80°C.

Stability: Frozen tissue blocks are stable for at least one year from date of shipping when stored at -80°C.

### Product images:



4x Image



20x Image