

Product datasheet for **CB543944**

Frozen Tissue Blocks, Breast

Product data:

| | |
|---|--|
| Product Type: | Frozen Blocks |
| Disease State: | Normal |
| Diagnosis Category: | Normal |
| Tissue: | Breast |
| Frozen Sample ID: | FR5B346AD2 |
| Case ID: | CI0000017957 |
| Tissue of Origin: | Breast |
| Site of Finding: | Breast |
| Appearance: | Normal |
| Sample Diagnosis (from Pathology Verification): | Within normal limits |
| Normal: | 100% |
| Lesional: | 0% |
| Tumor: | 0% |
| Tumor Hypo/Acellular Stroma: | 0% |
| Tumor Hypercellular Stroma: | 0% |
| Necrosis: | 0% |
| Pathology Verification notes from H&E review: | 10% Glandular epithelium, 30% Stroma, 60% Adipose tissue |
| CASE Diagnosis (from medical center path report): | No pathologic disease |
| Age: | 67 |
| Gender: | Female |
| Tumor Grade: | n/a |



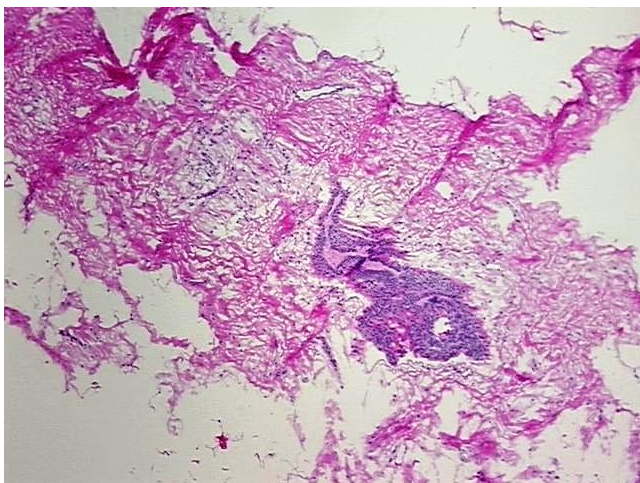
[View online »](#)

Minimum Stage
Grouping: n/a

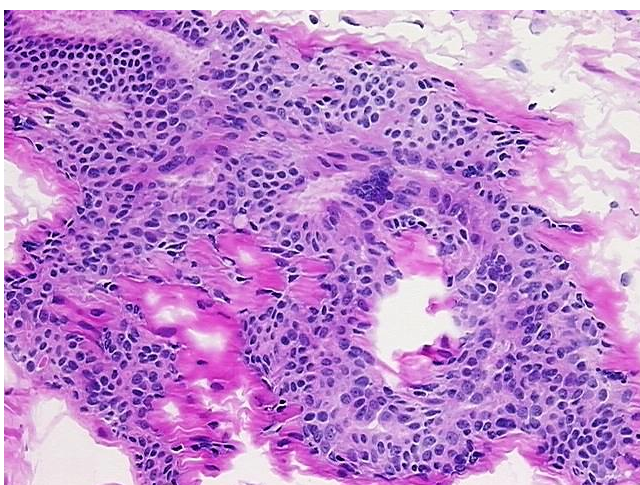
Storage: Store frozen tissue blocks at -80°C.

Stability: Frozen tissue blocks are stable for at least one year from date of shipping when stored at -80°C.

Product images:



4x Image



20x Image