

Product datasheet for **CB538535**

Frozen Tissue Blocks, Cervix

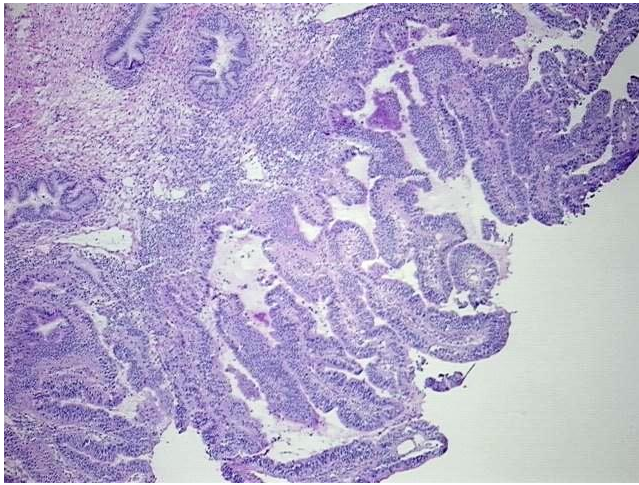
Product data:

| | |
|---|------------------------------|
| Product Type: | Frozen Blocks |
| Disease State: | Cancer |
| Diagnosis Category: | Cervical Cancer |
| Tissue: | Cervix |
| Frozen Sample ID: | FR00039E77 |
| Case ID: | CI0000015346 |
| Tissue of Origin: | Cervix |
| Site of Finding: | Cervix |
| Appearance: | Tumor |
| Sample Diagnosis (from Pathology Verification): | Adenocarcinoma of cervix |
| Normal: | 0% |
| Lesional: | 0% |
| Tumor: | 75% |
| Tumor Hypo/Acellular Stroma: | 15% |
| Tumor Hypercellular Stroma: | 10% |
| Necrosis: | 0% |
| Pathology Verification notes from H&E review: | Tumor: Villoglandular type |
| CASE Diagnosis (from medical center path report): | Adenocarcinoma of cervix |
| Age: | 49 |
| Gender: | Female |
| Tumor Grade: | FIGO G1: Well differentiated |

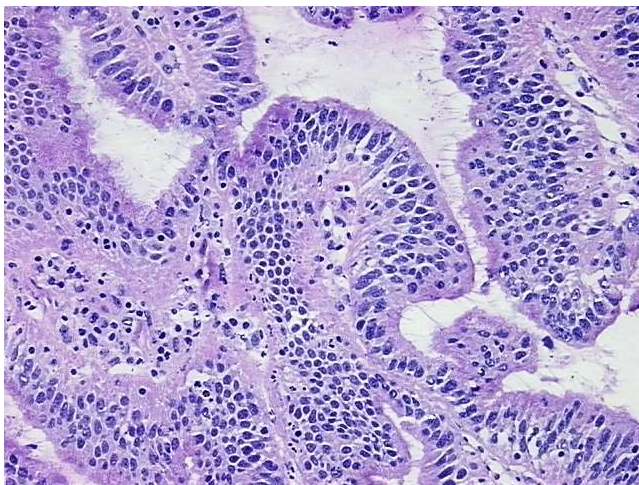


[View online »](#)

| | |
|------------------------------|---|
| Minimum Stage Grouping: | I |
| T (Extent of Primary Tumor): | pT1 |
| N (Lymph node metastasis): | pN0 |
| M (Distant metastasis): | pMX |
| Storage: | Store frozen tissue blocks at -80°C. |
| Stability: | Frozen tissue blocks are stable for at least one year from date of shipping when stored at -80°C. |

Product images:

4x Image



20x Image