

Product datasheet for **CB538468**

Frozen Tissue Blocks, Thyroid gland

Product data:

| | |
|---|---------------------------------|
| Product Type: | Frozen Blocks |
| Disease State: | Cancer |
| Diagnosis Category: | Thyroid Cancer |
| Tissue: | Thyroid gland |
| Frozen Sample ID: | FR00039DD5 |
| Case ID: | CI0000015334 |
| Tissue of Origin: | Thyroid gland |
| Site of Finding: | Thyroid gland |
| Appearance: | Tumor |
| Sample Diagnosis (from Pathology Verification): | Carcinoma of thyroid, papillary |
| Normal: | 25% |
| Lesional: | 0% |
| Tumor: | 70% |
| Tumor Hypo/Acellular Stroma: | 5% |
| Tumor Hypercellular Stroma: | 0% |
| Necrosis: | 0% |
| CASE Diagnosis (from medical center path report): | Carcinoma of thyroid, papillary |
| Age: | 53 |
| Gender: | Female |
| Tumor Grade: | Not Reported |
| Minimum Stage Grouping: | II |



[View online »](#)

T (Extent of Primary Tumor): pT2

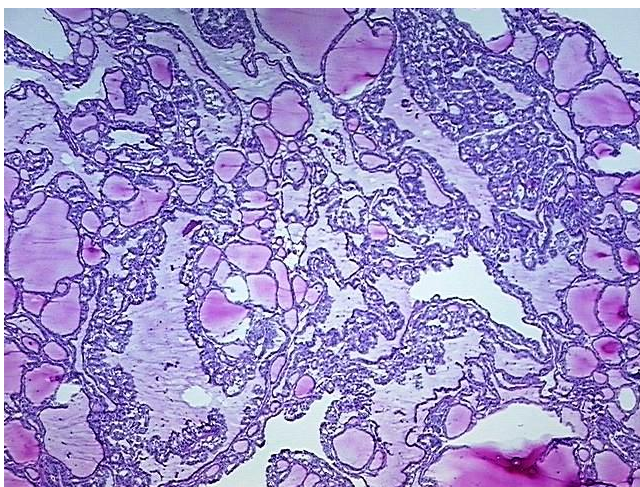
N (Lymph node metastasis): pN0

M (Distant metastasis): pMX

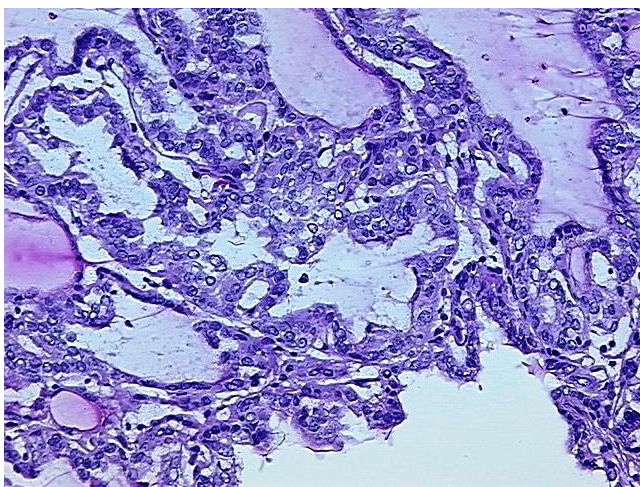
Storage: Store frozen tissue blocks at -80°C.

Stability: Frozen tissue blocks are stable for at least one year from date of shipping when stored at -80°C.

Product images:



4x Image



20x Image