

## Product datasheet for **CB536509**

### Frozen Tissue Blocks, Breast

#### Product data:

|   |  |
|---|--|
| Product Type:                                     | Frozen Blocks  |
| Disease State:                                    | Normal   |
| Diagnosis Category:                               | Normal   |
| Tissue:   | Breast   |
| Frozen Sample ID:                                 | FR0003BA97   |
| Case ID:  | CI0000014332   |
| Tissue of Origin:                                 | Breast   |
| Site of Finding:                                  | Breast   |
| Appearance:                                       | Normal   |
| Sample Diagnosis (from Pathology Verification):   | Within normal limits                                     |
| Normal:   | 100%   |
| Lesional:   | 0%   |
| Tumor:  | 0%   |
| Tumor Hypo/Acellular Stroma:                      | 0%   |
| Tumor Hypercellular Stroma:                       | 0%   |
| Necrosis:   | 0%   |
| Pathology Verification notes from H&E review:     | 25% Glandular epithelium, 55% Stroma, 20% Adipose tissue |
| CASE Diagnosis (from medical center path report): | Adenocarcinoma of breast, ductal                         |
| Age:  | 48   |
| Gender:   | Female   |
| Tumor Grade:                                      | n/a  |



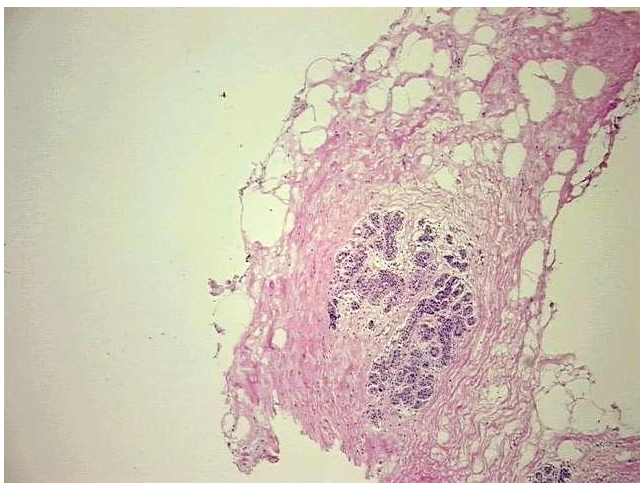
[View online »](#)

Minimum Stage  
Grouping: n/a

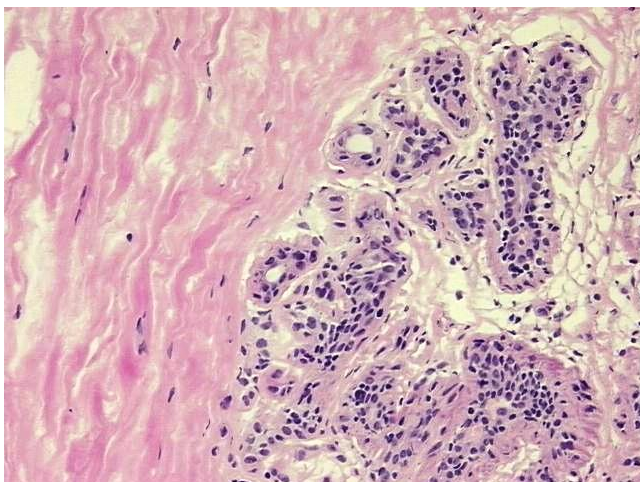
Storage: Store frozen tissue blocks at -80°C.

Stability: Frozen tissue blocks are stable for at least one year from date of shipping when stored at -80°C.

### Product images:



4x Image



20x Image