

## Product datasheet for **CB533981**

### Frozen Tissue Blocks, Breast

#### Product data:

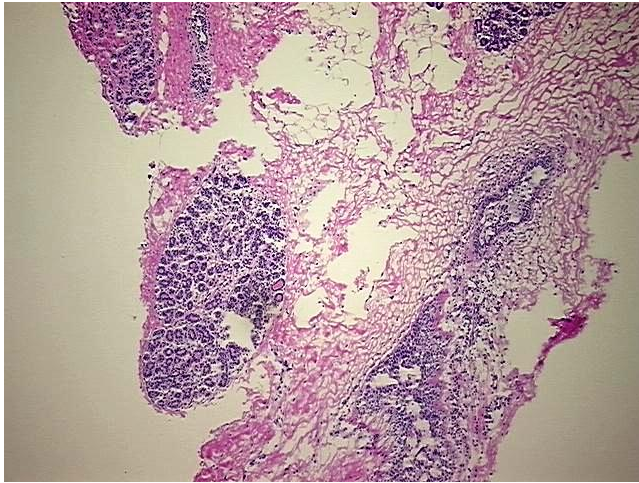
Product Type:	Frozen Blocks
Disease State:	Other Disease
Diagnosis Category:	Hyperplasia
Tissue:	Breast
Frozen Sample ID:	FR65EE45F7
Case ID:	CI0000013441
Tissue of Origin:	Breast
Site of Finding:	Breast
Appearance:	Lesion
Sample Diagnosis (from Pathology Verification):	Ductal hyperplasia of breast, atypical
Normal:	90%
Lesional:	10%
Tumor:	0%
Tumor Hypo/Acellular Stroma:	0%
Tumor Hypercellular Stroma:	0%
Necrosis:	0%
Pathology Verification notes from H&E review:	Inflammation: Mild Mixed inflammatory infiltrate; 40% Glandular epithelium, 40% Stroma, 20% Adipose tissue
CASE Diagnosis (from medical center path report):	Ductal hyperplasia of breast, atypical
Age:	45
Gender:	Female
Storage:	Store frozen tissue blocks at -80°C.



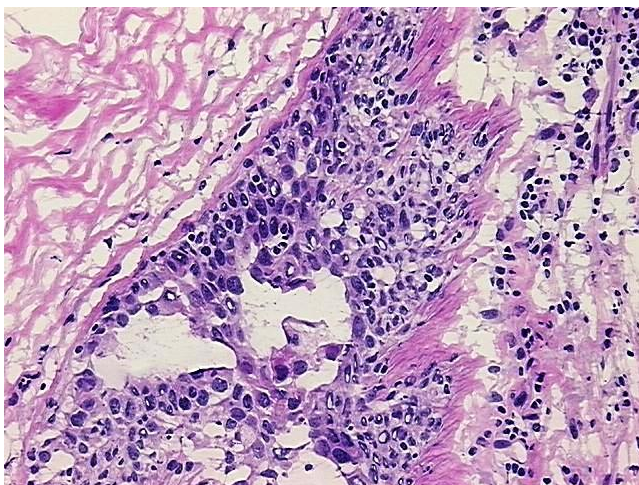
[View online »](#)

**Stability:** Frozen tissue blocks are stable for at least one year from date of shipping when stored at -80°C.

**Product images:**



4x Image



20x Image