

## Product datasheet for **CB533714**

### Frozen Tissue Blocks, Lung

#### Product data:

|   |   |
|---|---|
| Product Type:                                     | Frozen Blocks                                       |
| Disease State:                                    | Other Disease                                       |
| Diagnosis Category:                               | Chronic Obstructive Pulmonary Disease (COPD)        |
| Tissue:   | Lung  |
| Frozen Sample ID:                                 | FR0002FF7B  |
| Case ID:  | CI0000013341  |
| Tissue of Origin:                                 | Lung  |
| Site of Finding:                                  | Lung  |
| Appearance:                                       | Lesion  |
| Sample Diagnosis (from Pathology Verification):   | Emphysema, centrilobular                            |
| Normal:   | 50%   |
| Lesional:   | 50%   |
| Tumor:  | 0%  |
| Tumor Hypo/Acellular Stroma:                      | 0%  |
| Tumor Hypercellular Stroma:                       | 0%  |
| Necrosis:   | 0%  |
| Pathology Verification notes from H&E review:     | 90% Alveoli, 5% Bronchioles, 5% Fibrovascular septa |
| CASE Diagnosis (from medical center path report): | Adenocarcinoma of lung                              |
| Age:  | 80  |
| Gender:   | Female  |
| Tumor Grade:                                      | n/a   |



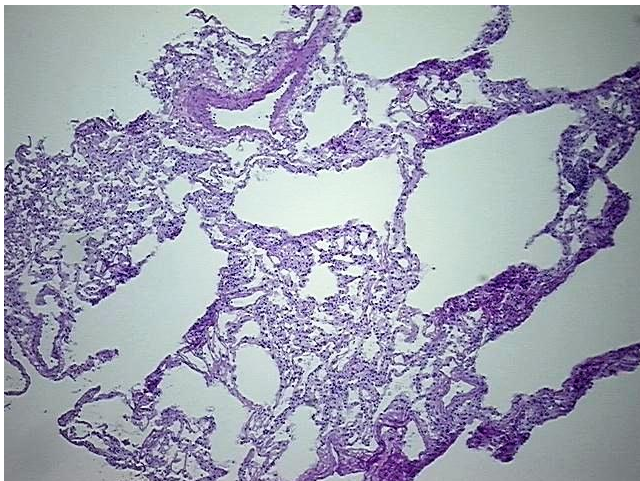
[View online »](#)

Minimum Stage Grouping: n/a

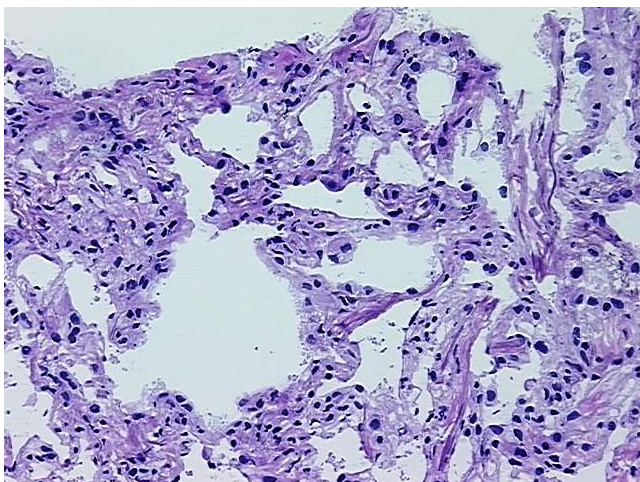
Storage: Store frozen tissue blocks at -80°C.

Stability: Frozen tissue blocks are stable for at least one year from date of shipping when stored at -80°C.

### Product images:



4x Image



20x Image