

Product datasheet for **CB533245**

Frozen Tissue Blocks, Lung

Product data:

| | |
|---|---|
| Product Type: | Frozen Blocks |
| Disease State: | Normal |
| Diagnosis Category: | Normal |
| Tissue: | Lung |
| Frozen Sample ID: | FR0002FE35 |
| Case ID: | CI0000013248 |
| Tissue of Origin: | Lung |
| Site of Finding: | Lung |
| Appearance: | Normal |
| Sample Diagnosis (from Pathology Verification): | Within normal limits |
| Normal: | 100% |
| Lesional: | 0% |
| Tumor: | 0% |
| Tumor Hypo/Acellular Stroma: | 0% |
| Tumor Hypercellular Stroma: | 0% |
| Necrosis: | 0% |
| Pathology Verification notes from H&E review: | 90% Alveoli, 5% Bronchioles, 5% Fibrovascular septa |
| CASE Diagnosis (from medical center path report): | Adenocarcinoma of lung |
| Age: | 56 |
| Gender: | Male |
| Tumor Grade: | n/a |



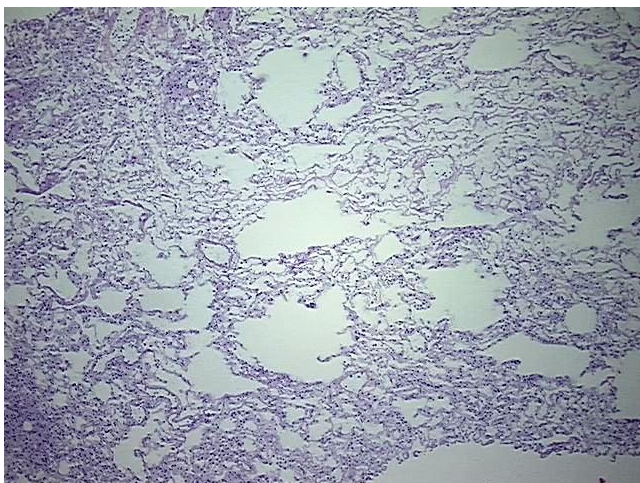
[View online »](#)

Minimum Stage
Grouping: n/a

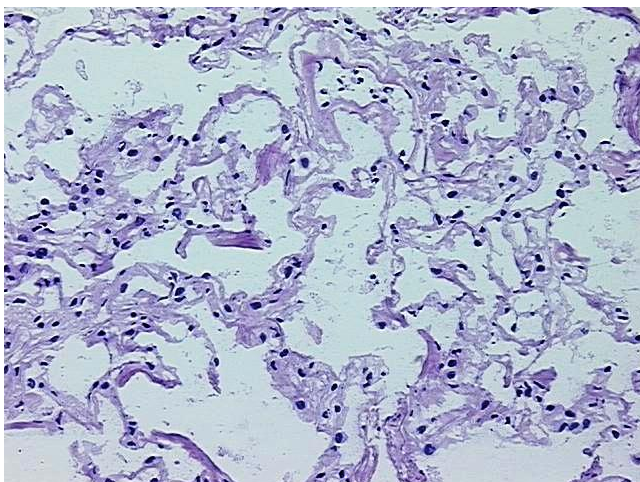
Storage: Store frozen tissue blocks at -80°C.

Stability: Frozen tissue blocks are stable for at least one year from date of shipping when stored at -80°C.

Product images:



4x Image



20x Image