

Product datasheet for **CB533008**

Frozen Tissue Blocks, Uterus

Product data:

Product Type:	Frozen Blocks
Disease State:	Normal
Diagnosis Category:	Normal
Tissue:	Uterus
Frozen Sample ID:	FR0002FFFE
Case ID:	CI0000013201
Tissue of Origin:	Uterus
Site of Finding:	Uterus
Appearance:	Normal
Sample Diagnosis (from Pathology Verification):	Within normal limits
Normal:	100%
Lesional:	0%
Tumor:	0%
Tumor Hypo/Acellular Stroma:	0%
Tumor Hypercellular Stroma:	0%
Necrosis:	0%
Pathology Verification notes from H&E review:	15% Glands, 25% Stroma, 60% Myometrium; Other Features/Comments: Secretory endometrium
CASE Diagnosis (from medical center path report):	Endometrium, secretory
Age:	47
Gender:	Female
Tumor Grade:	n/a



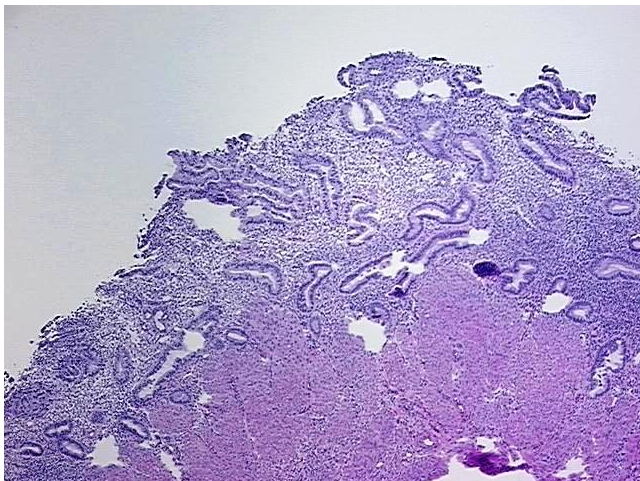
[View online »](#)

Minimum Stage Grouping: n/a

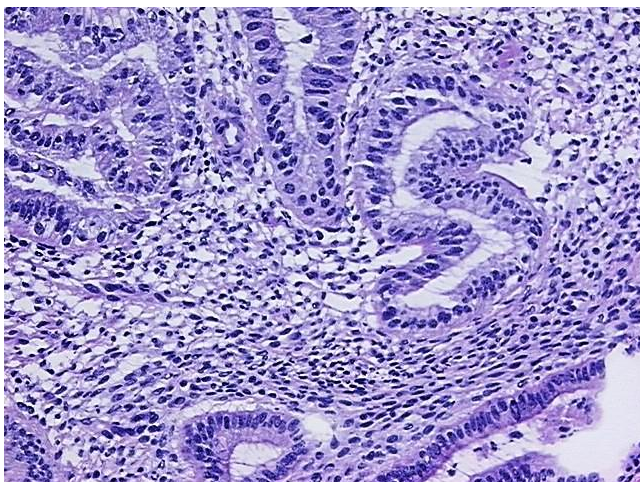
Storage: Store frozen tissue blocks at -80°C.

Stability: Frozen tissue blocks are stable for at least one year from date of shipping when stored at -80°C.

Product images:



4x Image



20x Image