

Product datasheet for **CB531374**

Frozen Tissue Blocks, Prostate

Product data:

Product Type:	Frozen Blocks
Disease State:	Normal
Diagnosis Category:	Normal
Tissue:	Prostate
Frozen Sample ID:	FR5B3402DB
Case ID:	CI0000012677
Tissue of Origin:	Prostate
Site of Finding:	Prostate
Appearance:	Normal
Sample Diagnosis (from Pathology Verification):	Within normal limits
Normal:	100%
Lesional:	0%
Tumor:	0%
Tumor Hypo/Acellular Stroma:	0%
Tumor Hypercellular Stroma:	0%
Necrosis:	0%
Pathology Verification notes from H&E review:	40% Epithelium, 60% Fibromuscular stroma
CASE Diagnosis (from medical center path report):	Adenocarcinoma of prostate
Age:	68
Gender:	Male
Tumor Grade:	n/a



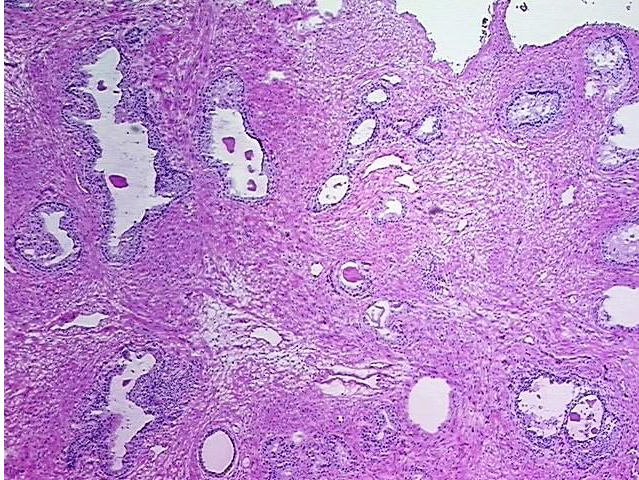
[View online »](#)

Minimum Stage Grouping: n/a

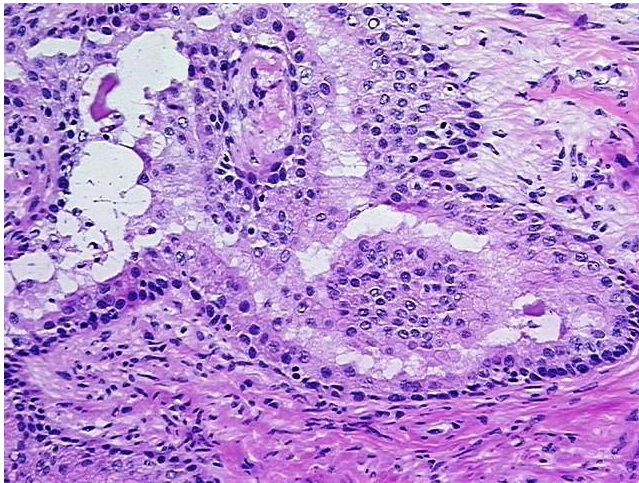
Storage: Store frozen tissue blocks at -80°C.

Stability: Frozen tissue blocks are stable for at least one year from date of shipping when stored at -80°C.

Product images:



4x Image



20x Image